

32107-32133 Lindero Canyon Road, Westlake Village

The Landing



LAKESIDE OFFICE SUITES AVAILABLE FOR LEASE

Jay Rubin

Principal
818.223.4385
jrubin@lee-re.com
DRE #01320005

Jared Smits

Principal
818.444.4986
jsmits@lee-re.com
DRE #01839532

Eugene Kim

Principal
818.444.4919
ekim@lee-re.com
DRE #01521416

Lee & Associates® LA North/Ventura, Inc.

5707 Corsa Ave., Ste 200 - Westlake Village, CA 91362 - Corp ID #01191898 - A Member of the Lee & Associates Group of Companies

All information furnished regarding the property is from sources deemed reliable, but no warranty or representation is made as to the accuracy thereof.

This information is submitted subject to errors, omissions, change of price or terms, prior sale or lease, or withdrawal without notice. No liability of any kind is to be imposed on the broker herein.

 **LEE &
ASSOCIATES**
COMMERCIAL REAL ESTATE SERVICES

The Landing

32107-32133 Lindero Canyon Road, Westlake Village

PROPERTY DETAILS

ADDRESS | 32107-32133 Lindero Canyon Road
Westlake Village, CA 91362

RENTAL RATE | \$3.30 / RSF, Modified Gross
Fixed CAM: \$0.12 / RSF
Tenant responsible for janitorial

PARKING | 3.9/1000 RSF Free Surface Parking

PROPERTY HIGHLIGHTS

- Charming Office and Retail Project along the shoreline of Westlake Lake
- Lakefront restaurants including Boccacio's, Zin Bistro, and The Landing Grill and Sushi Bar
- On-site Retailers, Building Management and Westlake Yacht Club
- Suites with stunning lake views
- Abundant 3.9/1000 SF of parking



Jay Rubin

Principal
818.223.4385
jrubin@lee-re.com
DRE #01320005

Jared Smits

Principal
818.444.4986
jsmits@lee-re.com
DRE #01839532

Eugene Kim

Principal
818.444.4919
ekim@lee-re.com
DRE #01521416

Lee & Associates® LA North/Ventura, Inc.

5707 Corsa Ave., Ste 200 - Westlake Village, CA 91362 - Corp ID #01191898 - A Member of the Lee & Associates Group of Companies

All information furnished regarding the property is from sources deemed reliable, but no warranty or representation is made as to the accuracy thereof.

This information is submitted subject to errors, omissions, change of price or terms, prior sale or lease, or withdrawal without notice. No liability of any kind is to be imposed on the broker herein.

 **LEE &
ASSOCIATES**
COMMERCIAL REAL ESTATE SERVICES

The Landing

32107-32133 Lindero Canyon Road, Westlake Village



AVAILABILITY SUMMARY

32129 Lindero Canyon Road

SUITE	SIZE	RATE	NOTES
206	1,318 SF	\$3.30	Lake Views Private Bathroom Spacious Work Area

Jay Rubin

Principal
818.223.4385
jrubin@lee-re.com
DRE #01320005

Jared Smits

Principal
818.444.4986
jsmits@lee-re.com
DRE #01839532

Eugene Kim

Principal
818.444.4919
ekim@lee-re.com
DRE #01521416

Lee & Associates® LA North/Ventura, Inc.

5707 Corsa Ave., Ste 200 - Westlake Village, CA 91362 - Corp ID #01191898 - A Member of the Lee & Associates Group of Companies

All information furnished regarding the property is from sources deemed reliable, but no warranty or representation is made as to the accuracy thereof.

This information is submitted subject to errors, omissions, change of price or terms, prior sale or lease, or withdrawal without notice. No liability of any kind is to be imposed on the broker herein.

 **LEE &
ASSOCIATES**
COMMERCIAL REAL ESTATE SERVICES

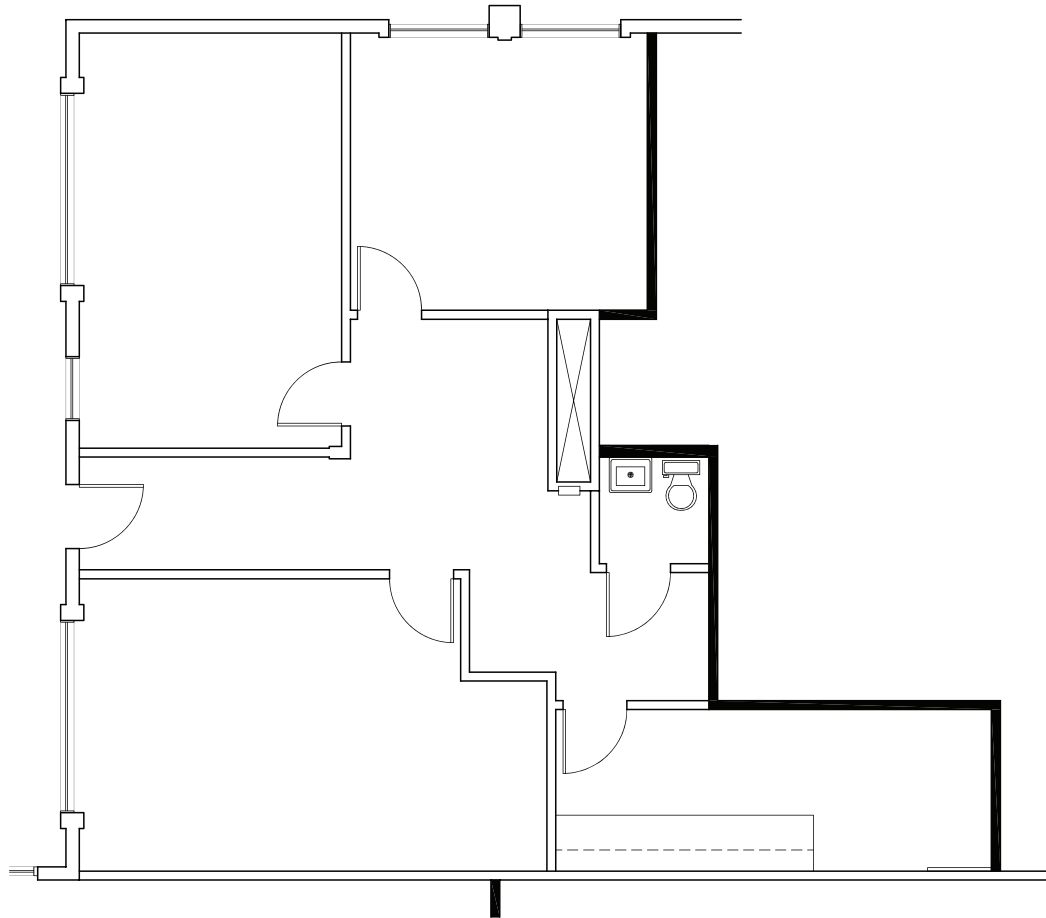
The Landing

32107-32133 Lindero Canyon Road, Westlake Village

32129
LINDERO
CANYON ROAD

Suite 206
1,318 SF \$3.30

Lake Views
Private Bathroom
Spacious Work Area



SUITE
206

Jay Rubin
Principal
818.223.4385
jrubin@lee-re.com
DRE #01320005

Jared Smits
Principal
818.444.4986
jsmits@lee-re.com
DRE #01839532

Eugene Kim
Principal
818.444.4919
ekim@lee-re.com
DRE #01521416

Lee & Associates® LA North/Ventura, Inc.

5707 Corsa Ave., Ste 200 - Westlake Village, CA 91362 - Corp ID #01191898 - A Member of the Lee & Associates Group of Companies

All information furnished regarding the property is from sources deemed reliable, but no warranty or representation is made as to the accuracy thereof.

This information is submitted subject to errors, omissions, change of price or terms, prior sale or lease, or withdrawal without notice. No liability of any kind is to be imposed on the broker herein.

 **LEE &
ASSOCIATES**
COMMERCIAL REAL ESTATE SERVICES

The Landing

32107-32133 Lindero Canyon Road, Westlake Village



Jay Rubin

Principal
818.223.4385
jrubin@lee-re.com
DRE #01320005

Jared Smits

Principal
818.444.4986
jsmits@lee-re.com
DRE #01839532

Eugene Kim

Principal
818.444.4919
ekim@lee-re.com
DRE #01521416

Lee & Associates® LA North/Ventura, Inc.

5707 Corsa Ave., Ste 200 - Westlake Village, CA 91362 - Corp ID #01191898 - A Member of the Lee & Associates Group of Companies

All information furnished regarding the property is from sources deemed reliable, but no warranty or representation is made as to the accuracy thereof.

This information is submitted subject to errors, omissions, change of price or terms, prior sale or lease, or withdrawal without notice. No liability of any kind is to be imposed on the broker herein.

 **LEE &
ASSOCIATES**
COMMERCIAL REAL ESTATE SERVICES

The Landing

32107-32133 Lindero Canyon Road, Westlake Village



THE LANDING
32107-32133 Lindero Canyon Rd.
Westlake Village, CA

- | | | | | |
|---|--|---|--|---|
| <p>SHOPPING & FINE DINING</p> <ol style="list-style-type: none"> 1. North Ranch Mall 2. The Promenade 3. Costco 4. Shoppes @ Westlake 5. Westlake Plaza 6. The Landing | <p>ATHLETIC CLUB/SPA</p> <ol style="list-style-type: none"> 7. Bay Club 8. Equinox 9. Calif. Longevity & Health Institute <p>GOLF COURSE</p> <ol style="list-style-type: none"> 10. Westlake Village Golf Course 11. North Ranch Country Club 12. Sherwood Lake Club | <p>HOTEL</p> <ol style="list-style-type: none"> 13. Four Seasons 14. Westlake Village Inn 15. Westlake Hyatt <p>SCHOOLS</p> <ol style="list-style-type: none"> 16. Westlake High School 17. Oaks Christian | <p>YACHT CLUB</p> <ol style="list-style-type: none"> 18. Westlake Village Yacht Club | <p>★ SUBJECT PROPERTY
The Landing, 32107-32133 Lindero Canyon Rd.
Westlake Village, CA</p> |
|---|--|---|--|---|

LIVE.WORK.PLAY.

Jay Rubin
Principal
818.223.4385
jrubin@lee-re.com
DRE #01320005

Jared Smits
Principal
818.444.4986
jsmits@lee-re.com
DRE #01839532

Eugene Kim
Principal
818.444.4919
ekim@lee-re.com
DRE #01521416

LEE & ASSOCIATES
COMMERCIAL REAL ESTATE SERVICES

Lee & Associates® LA North/Ventura, Inc.
5707 Corsa Ave., Ste 200 - Westlake Village, CA 91362 - Corp ID #01191898 - A Member of the Lee & Associates Group of Companies
All information furnished regarding the property is from sources deemed reliable, but no warranty or representation is made as to the accuracy thereof.
This information is submitted subject to errors, omissions, change of price or terms, prior sale or lease, or withdrawal without notice. No liability of any kind is to be imposed on the broker herein.