



6700 FALLBROOK AVENUE

West Hills, CA 91307

MODERN OFFICE SPACE FOR LEASE



JAY RUBIN
Principal
818.223.4385
jrubin@lee-re.com
DRE #01320005

EUGENE KIM
Principal
818.444.4919
ekim@lee-re.com
DRE #01521416

All information furnished regarding the property is from sources deemed reliable, but no warranty or representation is made as to the accuracy thereof. This information is submitted subject to errors, omissions, change of price or terms, prior sale or lease, or withdrawal without notice. No liability of any kind is to be imposed on the broker herein.



PROPERTY DETAILS

Lease Rate: \$2.20 RSF Modified Gross
Utilities included. Tenant is responsible for janitorial within premises.

Parking: 2.5/1,000 SF
\$85 per car per month

AVAILABILITY

SUITE	SQ. FT.	RATE	DESCRIPTION
150	±778	\$2.20 MG	2 Window Offices 1 Interior Office
235	±1,440	\$2.20 MG	2 Window Offices 2 Interior Offices Bullpen, Storage
250*	±1,425	\$2.20 MG	3 Offices, Kitchen, Bullpen
255*	±1,640	\$2.20 MG	5 Offices, Kitchen
292	±858	\$2.20 MG	2 Window Offices, Bullpen

*Suites 250 and 255 Contiguous for 2,865 RSF

PROPERTY HIGHLIGHTS

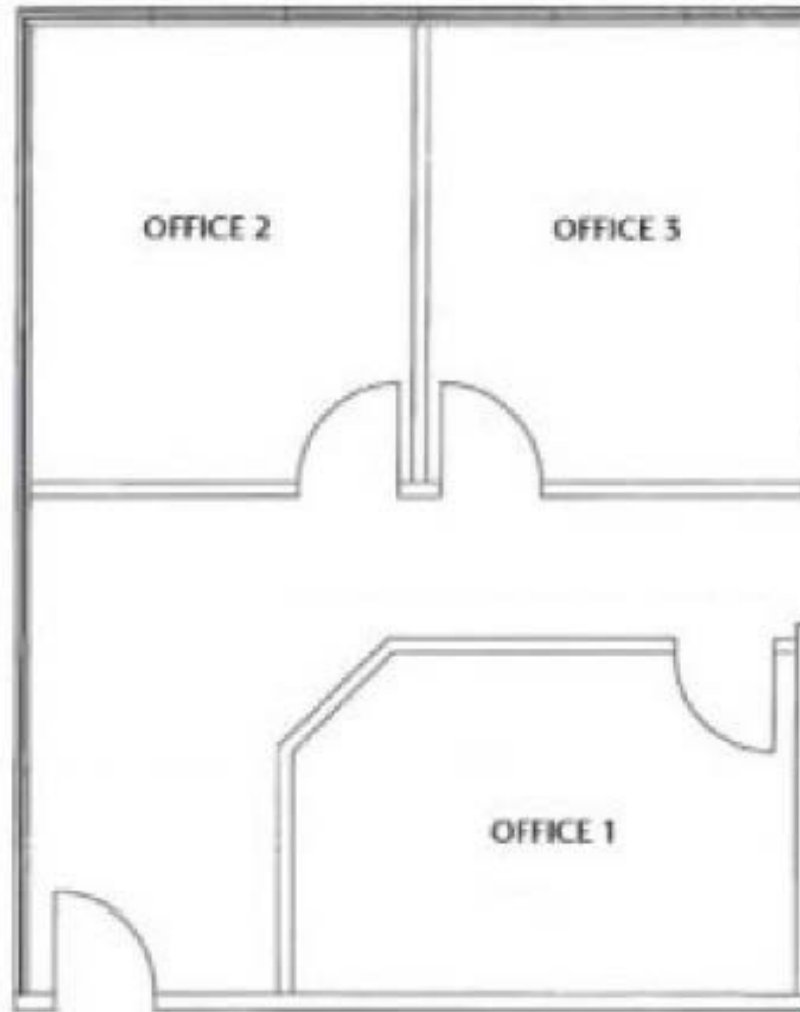
- Walking Distance to Restaurants, Starbucks & Retailers
- On Site Management
- Easy Access to 101 Freeway
- Move in Ready Spec Suites Available
- Beautifully Designed Common Areas
- AT&T Fiber Available

6700 Fallbrook Avenue
West Hills, CA

PRIME WEST HILLS
OFFICE SPACE AVAILABLE FOR LEASE



FLOOR PLAN: SUITE 150 - 778 RSF

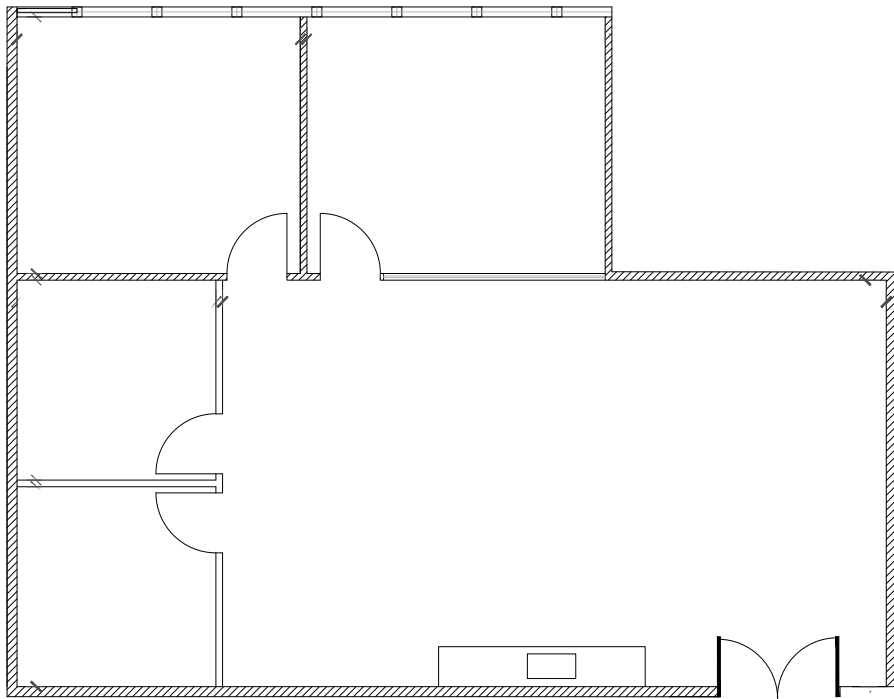


NOT TO SCALE

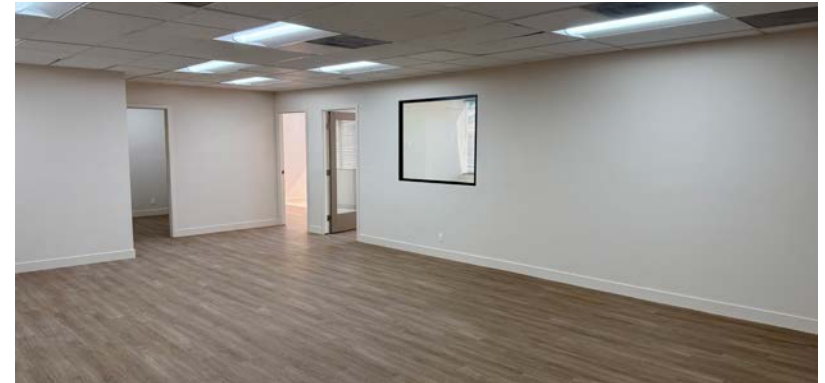
6700 Fallbrook Avenue
West Hills, CA

PRIME WEST HILLS
OFFICE SPACE AVAILABLE FOR LEASE

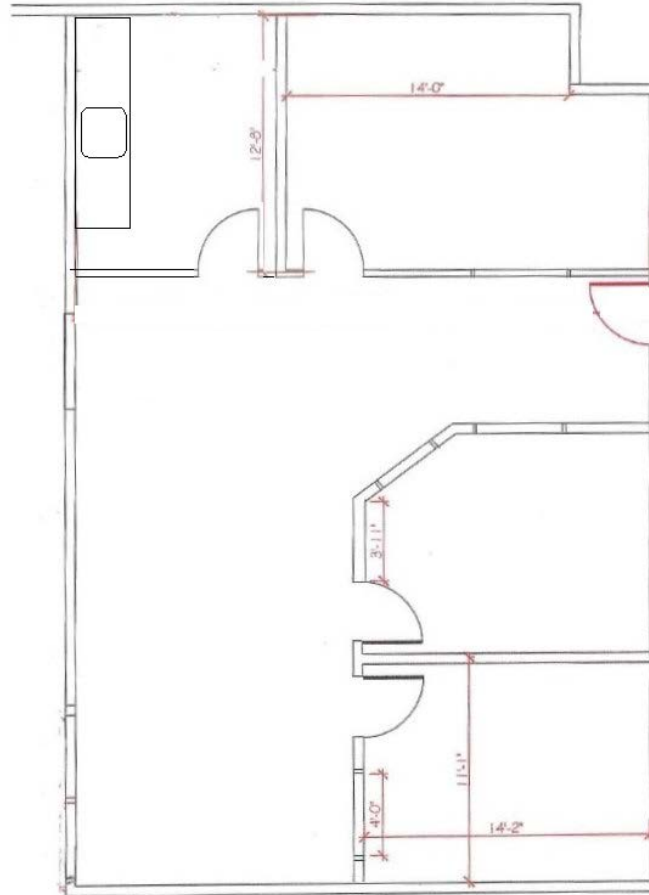
FLOOR PLAN: SUITE 235 - 1,440 RSF
Move in Ready Spec Suite Available!



NOT TO SCALE

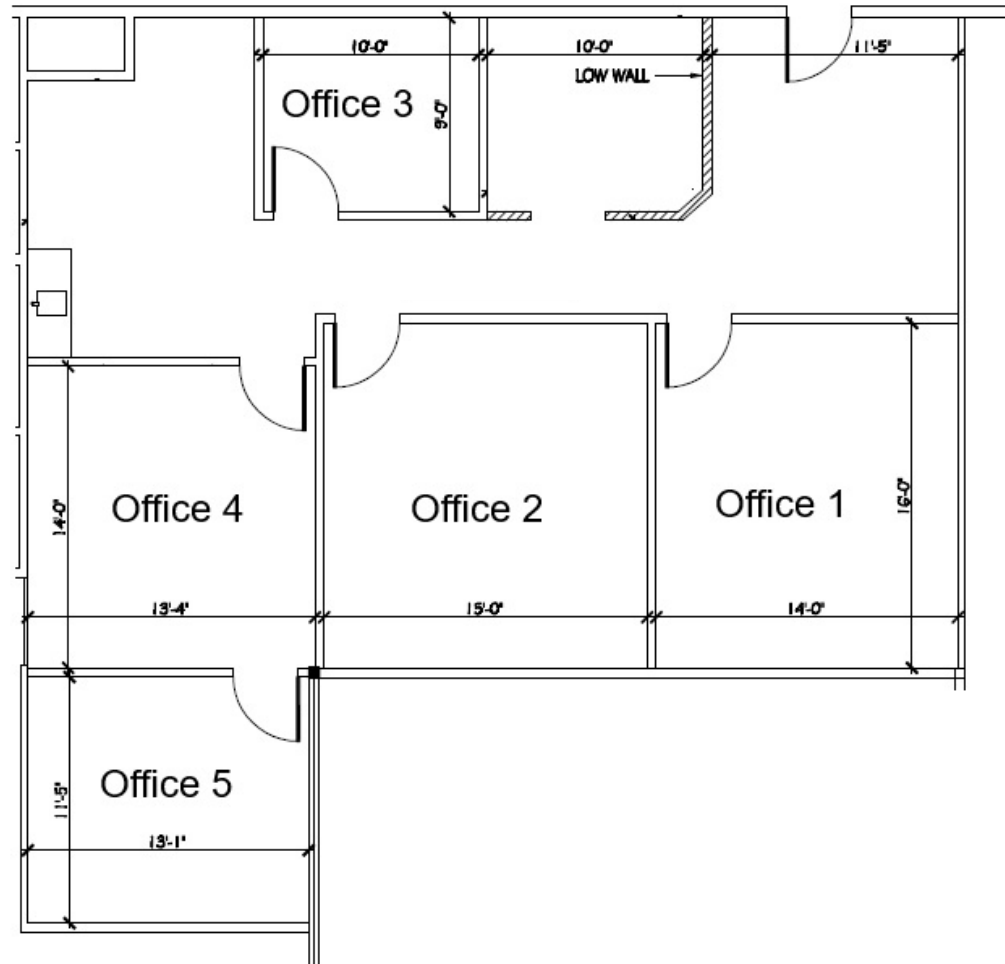


FLOOR PLAN: SUITE 250 - 1,425 RSF



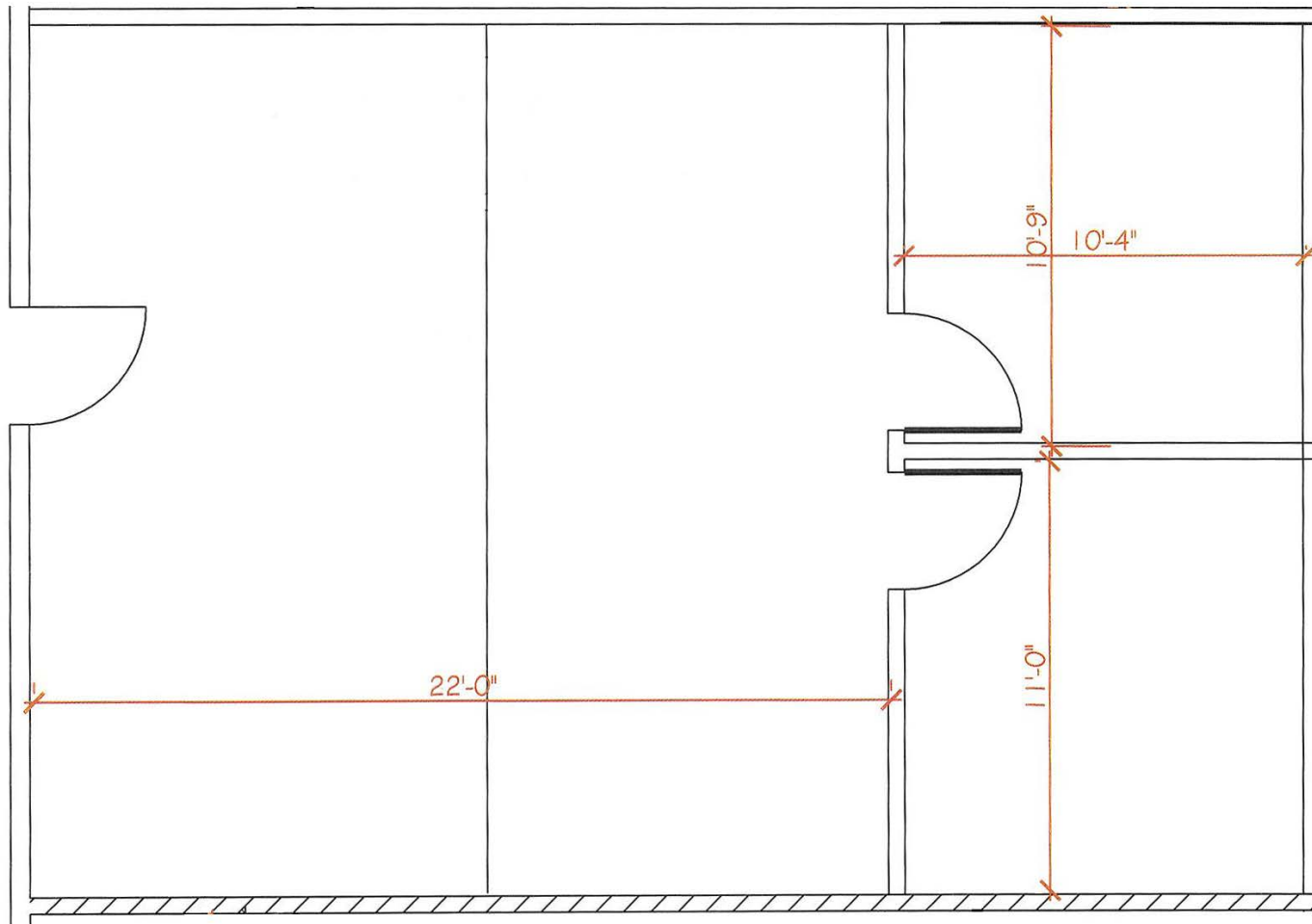
NOT TO SCALE

FLOOR PLAN: SUITE 255 - 1,640 RSF



NOT TO SCALE

FLOOR PLAN: SUITE 292 - 858 RSF



NOT TO SCALE

6700 Fallbrook Avenue
West Hills, CA

PRIME WEST HILLS
OFFICE SPACE AVAILABLE FOR LEASE



For more information:

Jay Rubin

Principal
818.223.4385
jrubin@lee-re.com
DRE #0132005

Website: www.JayRubin-RE.com

Eugene Kim

Principal
818.444.4919
ekim@lee-re.com
DRE #01521416

ABOUT LEE & ASSOCIATES

Lee & Associates offers an array of real estate services tailored to meet the needs of the company's clients, including commercial real estate brokerage, integrated services, and construction services. Established in 1979, Lee & Associates is now an international firm with 70+ offices throughout the United States and Canada. Our 1,300 professionals regularly collaborate to make sure they are providing their clients with the most advanced, up-to-date market technology and information. For the latest news from Lee & Associates, visit lee-associates.com or follow us on Facebook, LinkedIn, Twitter, and Link, our company blog.



COMMERCIAL REAL ESTATE SERVICES

Lee & Associates® - LA North/Ventura, Inc.
Corporate ID #01191898
A Member of the Lee & Associates®
Group of Companies
5707 Corsa Ave, Suite 200
Westlake Village, CA 91362
P:818.223.4388 F:818.591.1450

All information furnished regarding the property is from sources deemed reliable, but no warranty or representation is made as to the accuracy thereof. This information is submitted subject to errors, omissions, change of price or terms, prior sale or lease, or withdrawal without notice. No liability of any kind is to be imposed on the broker herein.

