

5850 Canoga Avenue

Woodland Hills | California

JAY RUBIN | jrubin@lee-re.com
Principal | JayRubin-RE.com
818.223.4385 | License ID# 01320005

EUGENE KIM | ekim@lee-re.com
Principal | License ID# 01521416
818.444.4919

 **LEE & ASSOCIATES**
COMMERCIAL REAL ESTATE SERVICES
Corporate ID #01191898

No warranty or representation is made to the accuracy of the foregoing information. Terms of sale or lease and availability are subject to change or withdrawal without notice.

Prime Warner Center Office Space For Lease | 5850 Canoga Avenue | Woodland Hills



PROPERTY DETAILS

| | |
|--------------|------------------------------------------------------------------------------------------------------------------------------------------------------|
| ADDRESS | 5850 Canoga Avenue Woodland Hills, CA 91367 |
| AVAILABILITY | Suite 110: 2,229 RSF (Available 7/1/26) Suite 210: 2,516 RSF Suite 250: 2,897 RSF <i>*Suites 210 & 250 are contiguous for 5,413 RSF</i> |
| RATE | \$2.50 RSF Full Service Gross |
| PARKING | 3/1,000 RSF - Free Surface |

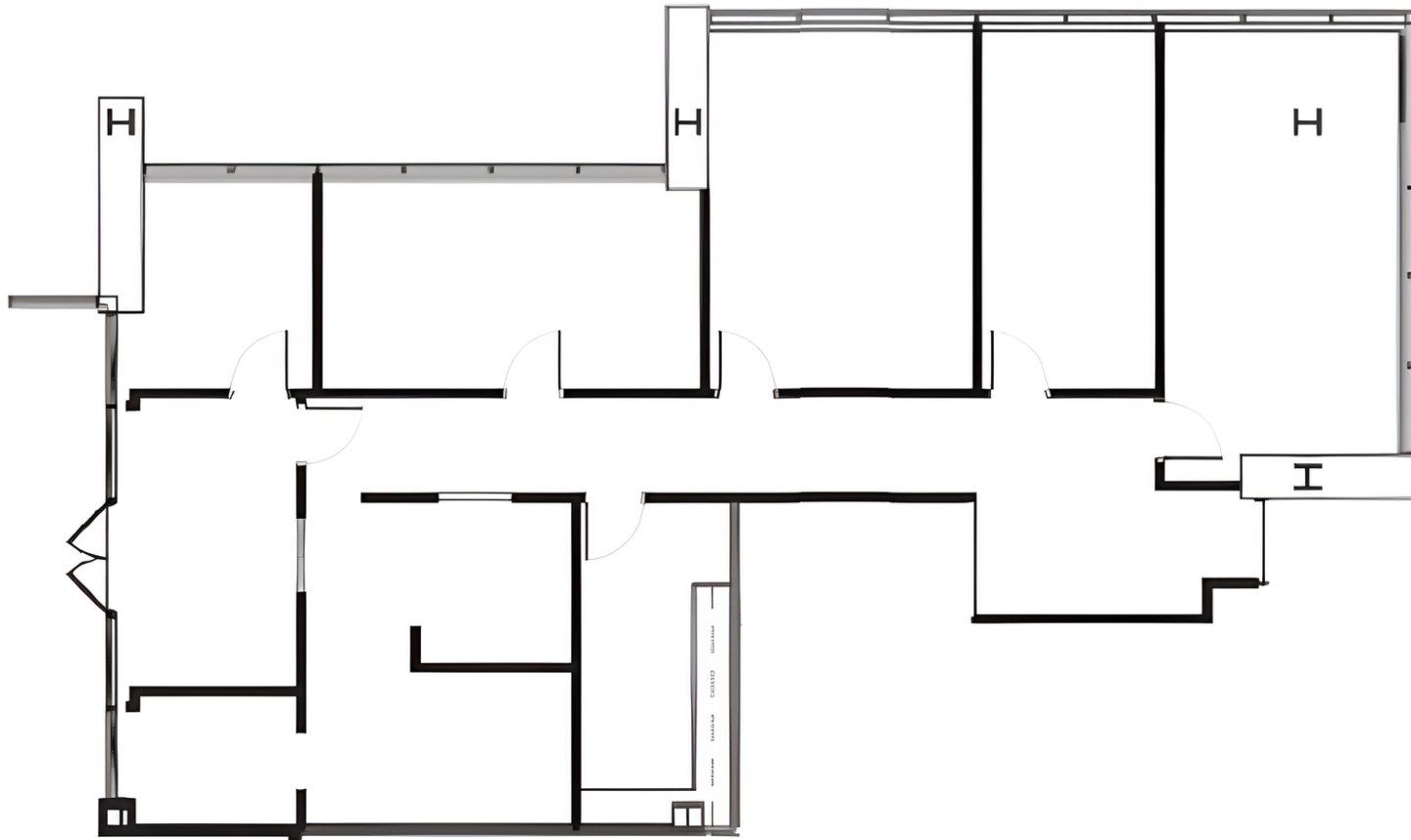
PROPERTY HIGHLIGHTS

- HIGHLY IMPROVED SUITE WITH EFFICIENT FLOORPLAN
- FREE PARKING FOR TENANTS & VISITORS
- AMAZING WINDOW LINE WITH EXTRAORDINARY VIEWS OF WARNER CENTER
- LOW LOAD FACTOR
- MONUMENT SIGNAGE AVAILABLE
- PRESTIGIOUS WARNER CENTER LOCATION
- EASY ACCESS TO US 101 FREEWAY
- WALKING DISTANCE TO BANKS & RESTAURANTS



Prime Warner Center Office Space For Lease | 5850 Canoga Avenue | Woodland Hills

Floorplan: Suite 110 - 2,229 RSF



*Not to scale

JAY RUBIN | jrubin@lee-re.com
Principal | JayRubin-RE.com
818.223.4385 | License ID# 01320005

EUGENE KIM | ekim@lee-re.com
Principal | License ID# 01521416
818.444.4919

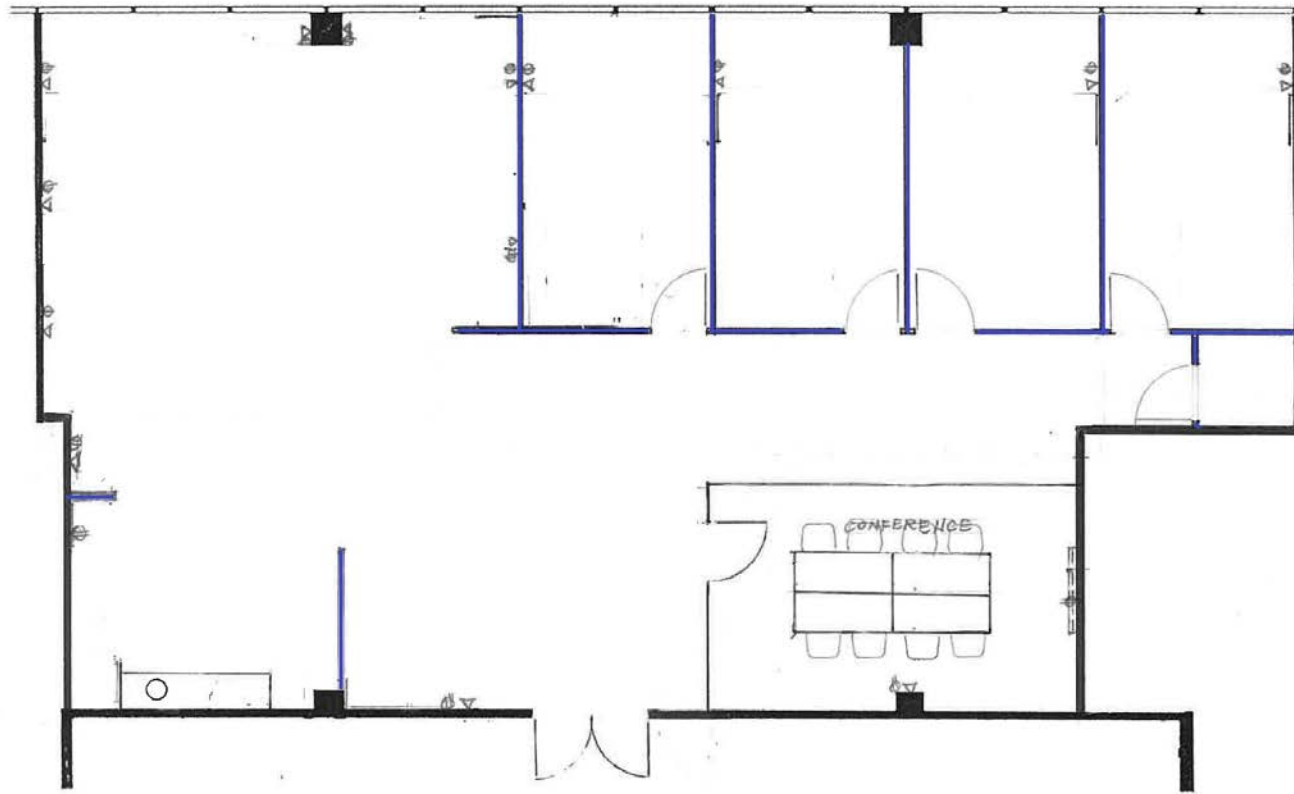


Lee & Associates® - LA North/Ventura, Inc. • Corporate ID #01191898
A Member of the Lee & Associates® Group of Companies
5707 Corsa Ave, Suite 200, Westlake Village, CA 91362
P:818.223.4388 F:818.591.1450

No warranty or representation is made to the accuracy of the foregoing information. Terms of sale or lease and availability are subject to change or withdrawal without notice.

Prime Warner Center Office Space For Lease | 5850 Canoga Avenue | Woodland Hills

Floorplan: Suite 210 - 2,516 RSF **Suites 210 & 250 are contiguous for 5,413 RSF*



*Not to scale

JAY RUBIN | jrubin@lee-re.com
Principal | JayRubin-RE.com
818.223.4385 | License ID# 01320005

EUGENE KIM | ekim@lee-re.com
Principal | License ID# 01521416
818.444.4919

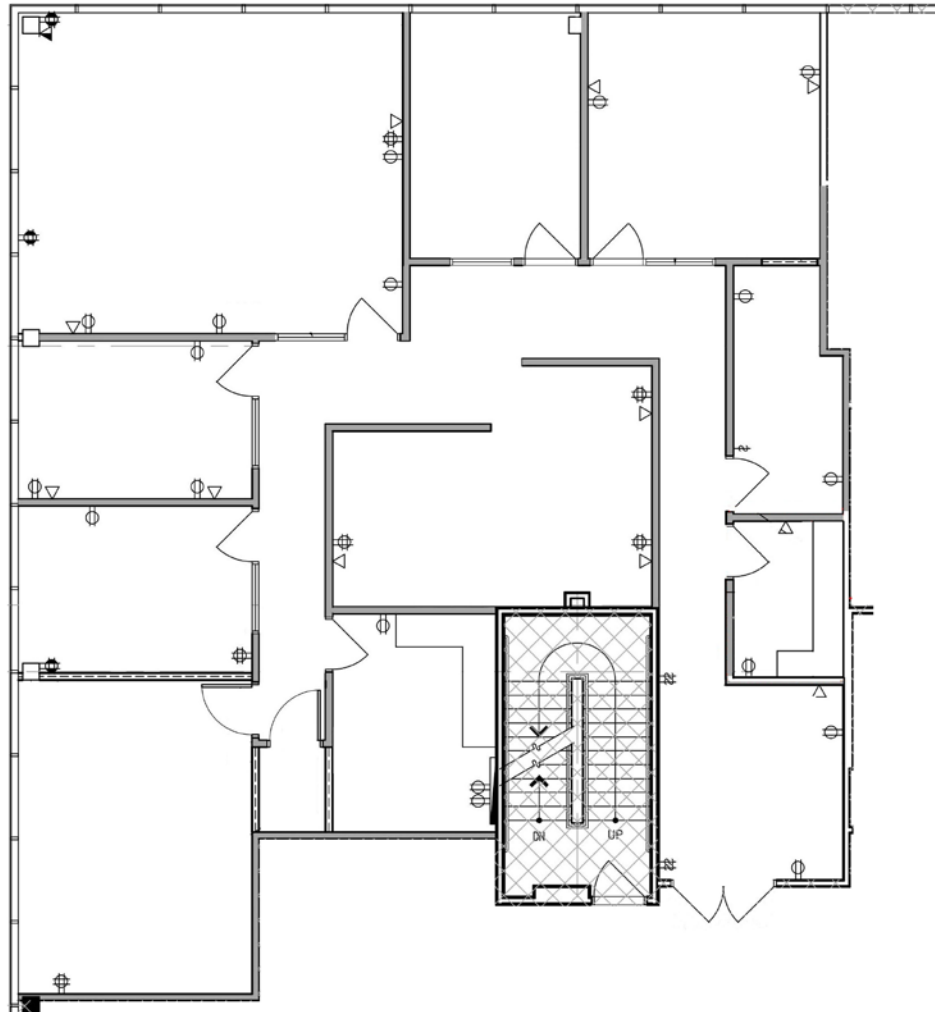


Lee & Associates® - LA North/Ventura, Inc. • Corporate ID #01191898
A Member of the Lee & Associates® Group of Companies
5707 Corsa Ave, Suite 200, Westlake Village, CA 91362
P:818.223.4388 F:818.591.1450

No warranty or representation is made to the accuracy of the foregoing information. Terms of sale or lease and availability are subject to change or withdrawal without notice.

Prime Warner Center Office Space For Lease | 5850 Canoga Avenue | Woodland Hills

Floorplan: Suite 250 - 2,897 RSF **Suites 210 & 250 are contiguous for 5,413 RSF*



*Not to scale

JAY RUBIN | jrubin@lee-re.com
Principal | JayRubin-RE.com
818.223.4385 | License ID# 01320005

EUGENE KIM | ekim@lee-re.com
Principal | License ID# 01521416
818.444.4919



Lee & Associates® - LA North/Ventura, Inc. • Corporate ID #01191898
A Member of the Lee & Associates® Group of Companies
5707 Corsa Ave, Suite 200, Westlake Village, CA 91362
P:818.223.4388 F:818.591.1450

No warranty or representation is made to the accuracy of the foregoing information. Terms of sale or lease and availability are subject to change or withdrawal without notice.