

21204 Erwin Street



Free Standing Building for Lease / Prime Warner Center
21204 Erwin Street
Woodland Hills, CA

Jay Rubin, Principal
818.223.4385
jrubin@lee-re.com
BRE# 01320005

LEE & ASSOCIATES
COMMERCIAL REAL ESTATE SERVICES
CORP ID 01191898

No warranty or representation is made to the accuracy of the foregoing information. Terms of sale or lease and availability are subject to change or withdrawal without notice.

21204 Erwin Street

Woodland Hills, CA

Free Standing Building for Lease Prime Warner Center



PROPERTY DETAILS

21204 Erwin St

Available: 11,130 Rentable Square Feet
Lease Rate: \$2.40 per RSF, Modified Gross
Parking: 3/1,000



21204 Erwin Street

Available: 11,130 Rentable Square Feet

PROPERTY HIGHLIGHTS

- Prestigious location in the Heart of Warner Center
- Free Standing Building
- Dramatic high ceilings
- Sky lights
- Building signage
- Connected with AT&T fiber
- Modern buildout

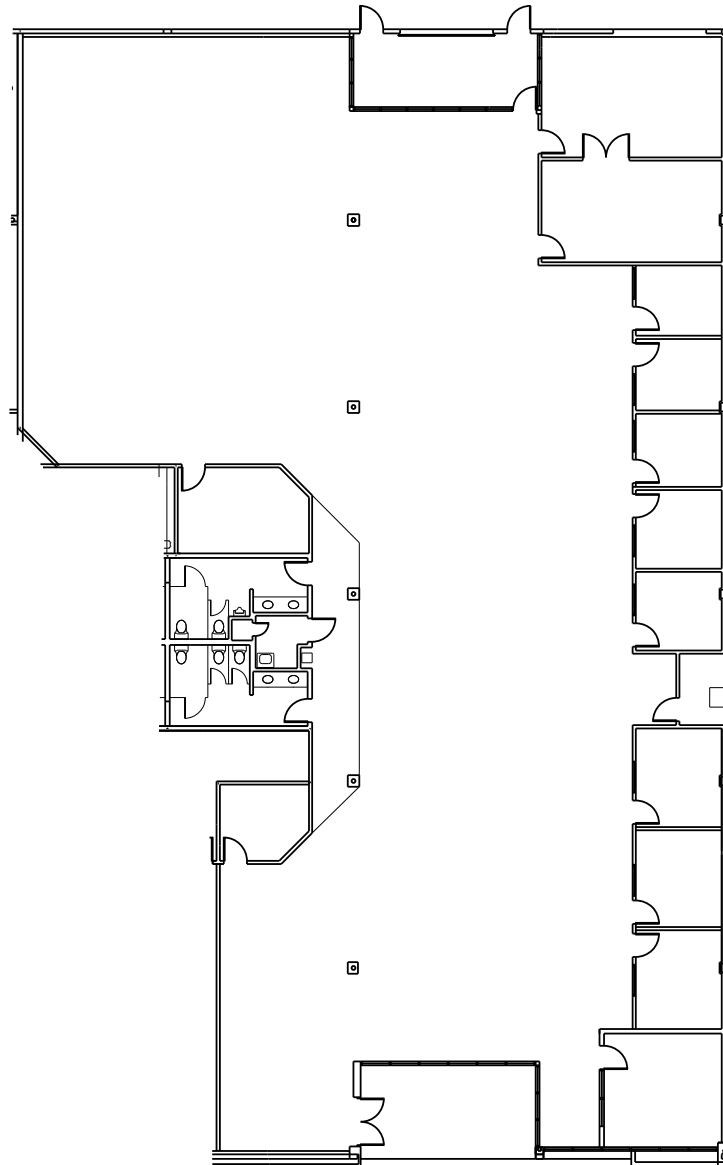


21204 Erwin Street

Woodland Hills, CA

Free Standing Building for Lease
Prime Warner Center

FLOOR PLAN



*Not to scale

21204 Erwin Street

Woodland Hills, CA

Free Standing Building for Lease
Prime Warner Center



LEASING INFORMATION

Jay Rubin

Principal

818.223.4385

jrubin@lee-re.com

BRE# 01320005



Lee & Associates® - LA North/Ventura, Inc.
Corporate ID #01191898
A Member of the Lee & Associates®
Group of Companies
5707 Corsa Ave., Suite 200
Westlake Village, CA 91302
P:818.223.4388 F:818.591.1450

Rev.01-14-002026

No warranty or representation is made to the accuracy of the foregoing information. Terms of sale or lease and availability are subject to change or withdrawal without notice.