

# 22736 Vanowen St, West Hills



For more information please contact:

**Jay Rubin**

Principal  
818.223.4385  
jrubin@lee-re.com  
License #01320005

**Eugene Kim**

Principal  
818.444.4919  
ekim@lee-re.com  
License # 01521416



**LEE &  
ASSOCIATES**

COMMERCIAL REAL ESTATE SERVICES

No warranty or representation is made to the accuracy of the foregoing information. Terms of sale or lease and availability are subject to change or withdrawal without notice.

Lee & Associates® - LA North/Ventura, Inc.  
A Member of the Lee & Associates Group of Companies  
5707 Corsa Ave, Suite 200, Westlake Village, CA 91362  
www.lee-associates.com • Corp ID #01191898



# 22736 Vanowen St, West Hills, CA

## AVAILABILITY

- Suite 100B | 1,870 RSF | \$2.10 FSG
  - Suite 200 | 1,208 RSF | \$2.10 FSG\*
  - Suite 209 | 1,358 RSF | \$2.10 FSG\*
  - Suite 300 | 5,096 RSF | \$2.10 FSG
- Suite 200 and 209 contiguous for 2,566 RSF\*

## RENTAL RATE

**\$1.50 to \$2.25/RSF - Full Service**

## PARKING

**2.7/1,000 SF  
\$50/Month**

## FEATURES

- Highly Improved Spec Suites Available
- Newly Renovated Common areas
- Walking Distance to amenities
- Generous Window Line
- Onsite Management

For more information please contact:

**Jay Rubin**

Principal

818.223.4385

[jrubin@lee-re.com](mailto:jrubin@lee-re.com)

License #01320005

**Eugene Kim**

Principal

818.444.4919

[ekim@lee-re.com](mailto:ekim@lee-re.com)

License # 01521416



**LEE &  
ASSOCIATES**

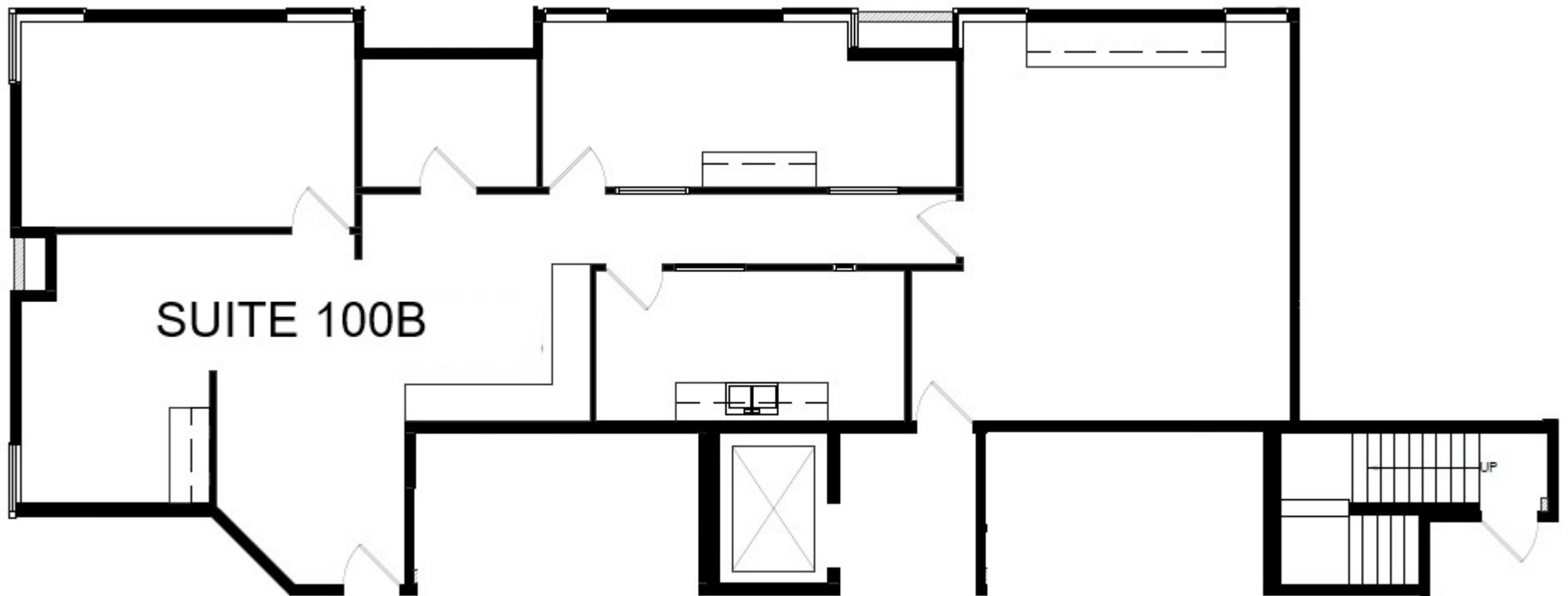
COMMERCIAL REAL ESTATE SERVICES

No warranty or representation is made to the accuracy of the foregoing information. Terms of sale or lease and availability are subject to change or withdrawal without notice.



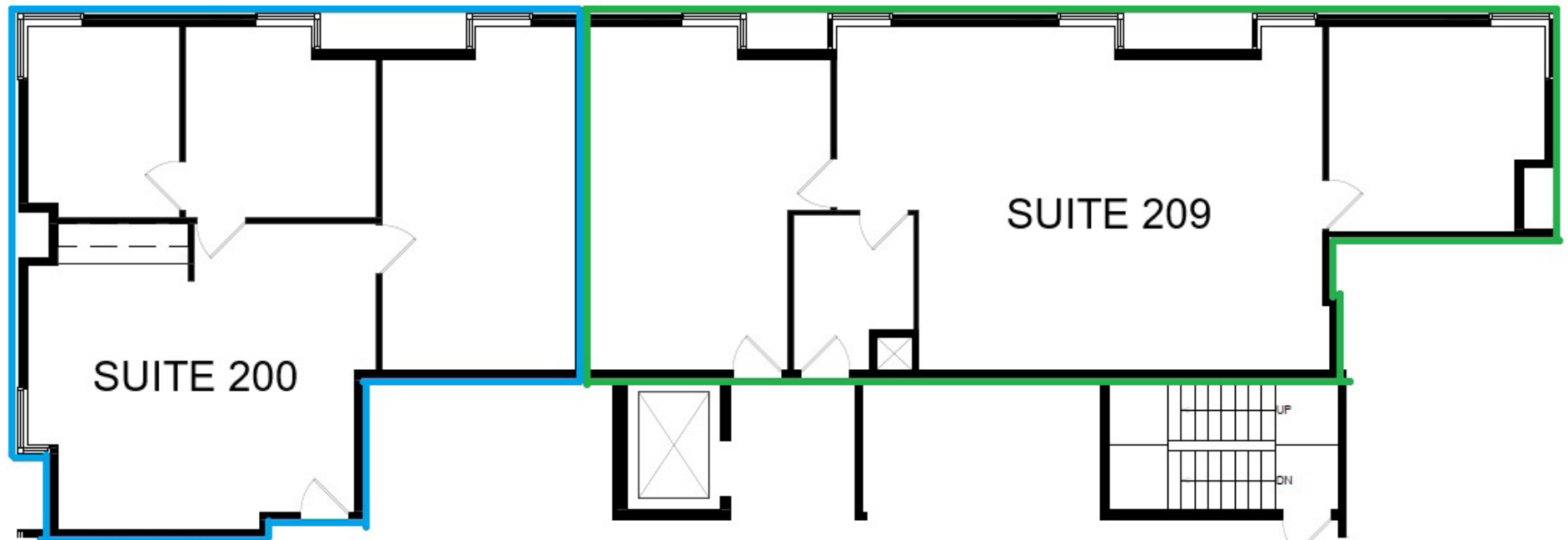
# 22736 Vanowen St, West Hills, CA

## Suite 100B Floor Plan



# 22736 Vanowen St, West Hills, CA

## Suite 200 & 209 Floor Plan



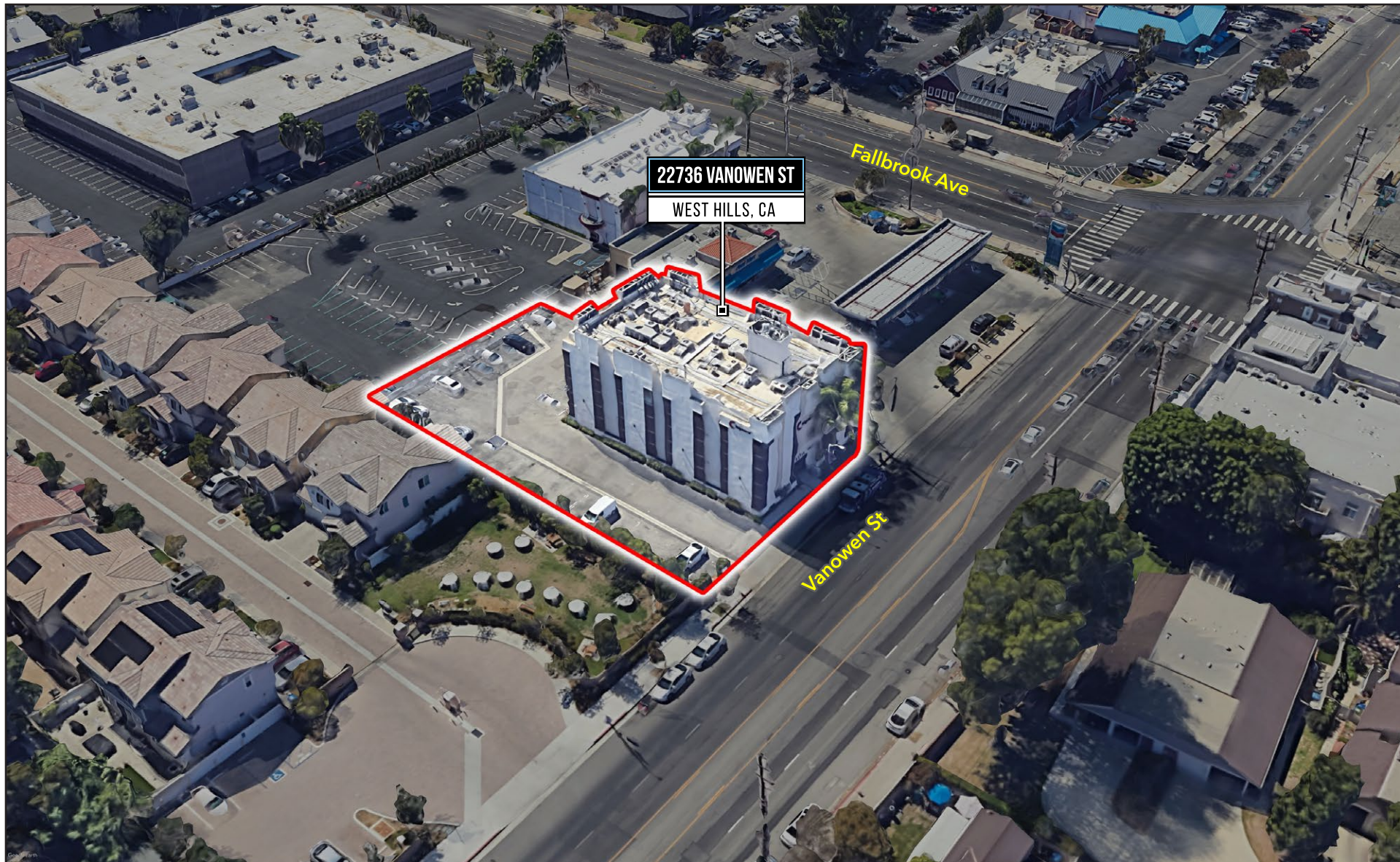
# 22736 Vanowen St, West Hills, CA

## Suite 300 Floor Plan





# 22736 Vanowen St, West Hills, CA





# 22736 Vanowen St, West Hills, CA

