

6800 Owensmouth Avenue

Warner Center | California

PRIME WARNER CENTER OFFICE SPACE FOR LEASE

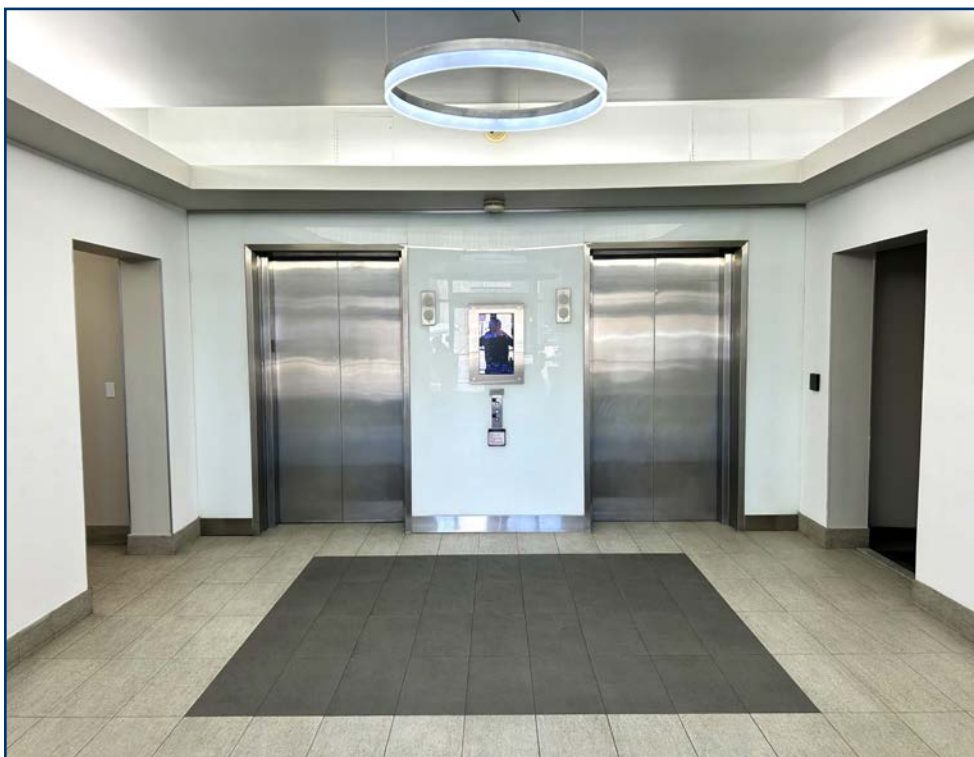


JAY RUBIN | jrubin@lee-re.com
Principal | JayRubin-RE.com
818.223.4385 | License ID# 01320005

EUGENE KIM | ekim@lee-re.com
Principal | License ID# 01521416
818.444.4919

LEE & ASSOCIATES
COMMERCIAL REAL ESTATE SERVICES
Corporate ID #01191898

PRIME WARNER CENTER OFFICE SPACE FOR LEASE | 6800 OWENSMOUTH AVENUE



PROPERTY DETAILS

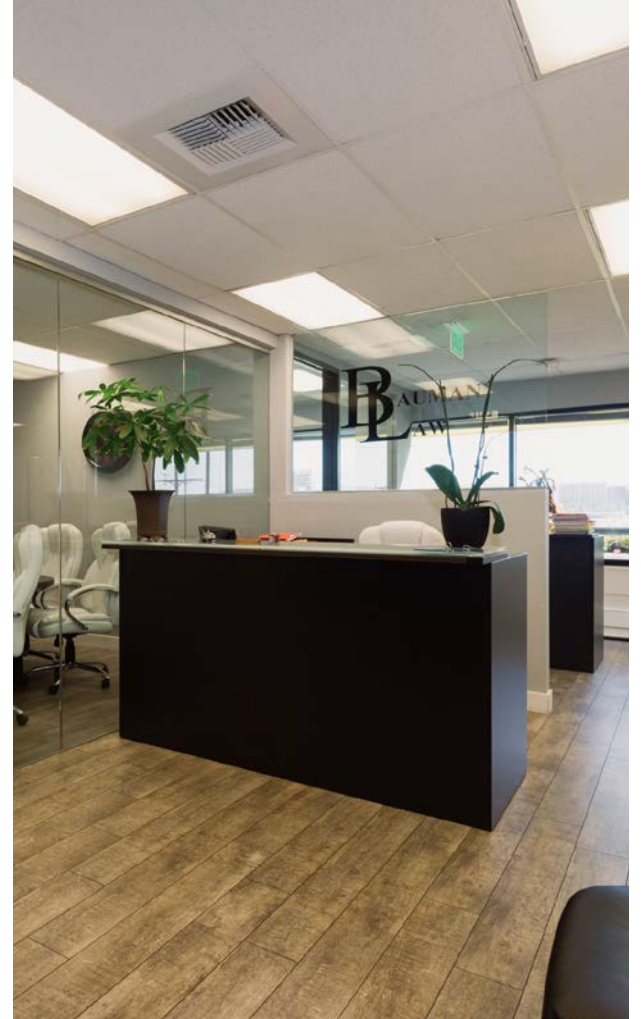
ADDRESS	6800 Owensmouth Avenue Warner Center, CA 91303
AVAILABILITY	Suite 100: 4,568 RSF Suite 200: 2,587 RSF Suite 295: 850 RSF Suite 320: 1,971 RSF Suite 370: 5,602 RSF Suite 440: 755 RSF
RENTAL RATE	\$2.05 per RSF
PARKING	3/1000 RSF

PROPERTY HIGHLIGHTS

- On-site cafe
- Fiber connection to the building
- AT&T and Spectrum available
- On-site facility manager
- Private balconies available on select suites
- Extraordinary window lines and views
- Convenient access to 101 and 118 Freeways
- Adjacent to the Westfield Topanga Mall, The Village at Westfield Topanga, and numerous other restaurants and retail amenities
- Walking distance to the LA Metro Orange Line

PRIME WARNER CENTER OFFICE SPACE FOR LEASE | 6800 OWENSMOUTH AVENUE

Photo Gallery



JAY RUBIN | jrubin@lee-re.com
Principal | JayRubin-RE.com
818.223.4385 | **License ID# 01320005**

EUGENE KIM | ekim@lee-re.com
Principal | **License ID# 01521416**
818.444.4919

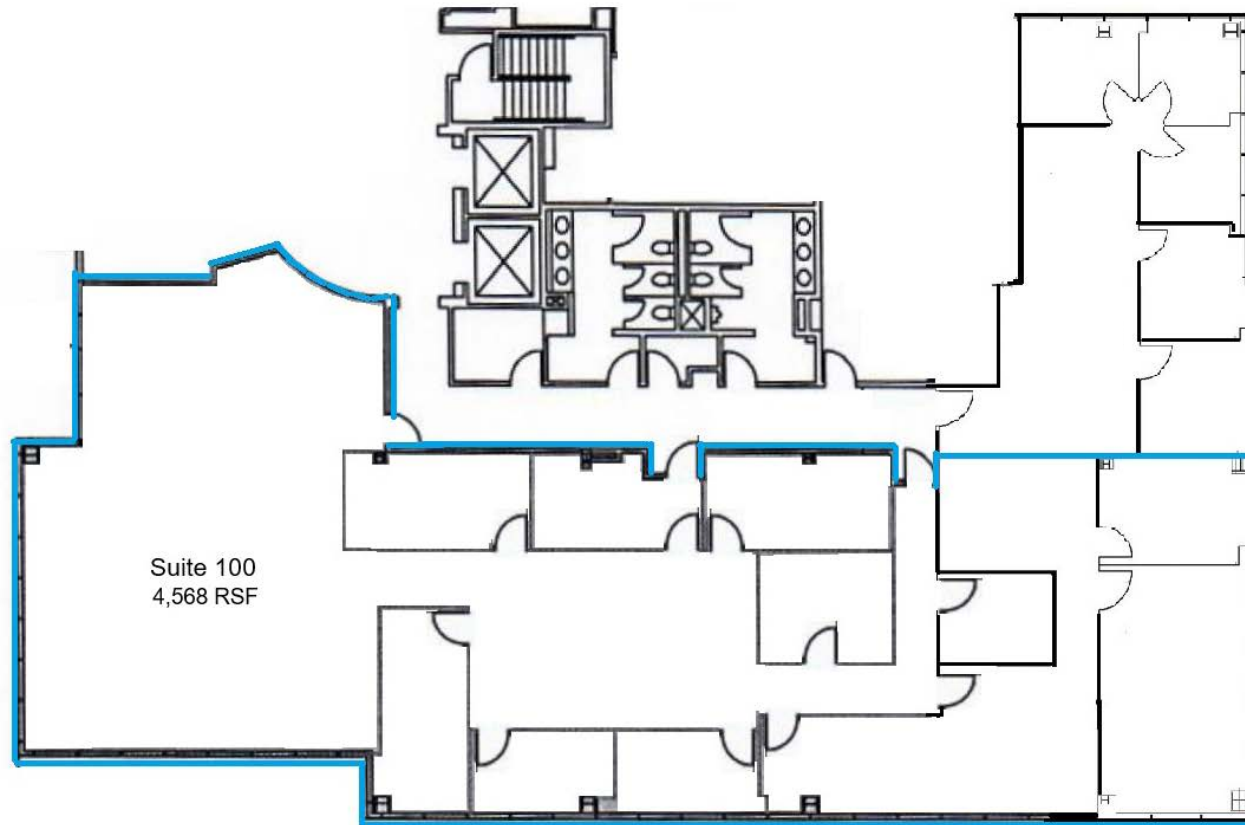


Lee & Associates® - LA North/Ventura, Inc. • Corporate ID #01191898
A Member of the Lee & Associates® Group of Companies
5707 Corsa Ave, Suite 200, Westlake Village, CA 91362
P:818.223.4388 F:818.591.1450

No warranty or representation is made to the accuracy of the foregoing information. Terms of sale or lease and availability are subject to change or withdrawal without notice.

PRIME WARNER CENTER OFFICE SPACE FOR LEASE | 6800 OWENSMOUTH AVENUE

Floorplan: Suite 100



*Not to scale

JAY RUBIN | jrubin@lee-re.com
Principal | JayRubin-RE.com
818.223.4385 | License ID# 01320005

EUGENE KIM | ekim@lee-re.com
Principal | License ID# 01521416
818.444.4919

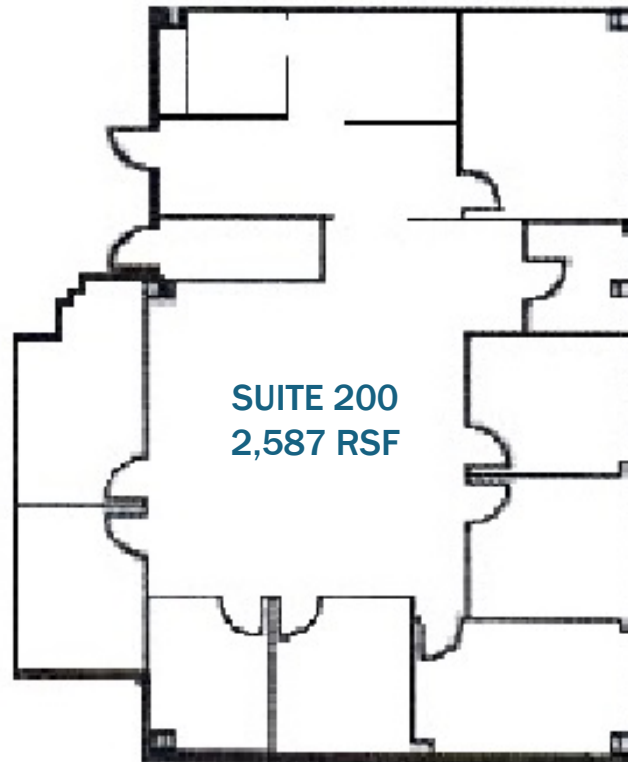


Lee & Associates® - LA North/Ventura, Inc. • Corporate ID #01191898
A Member of the Lee & Associates® Group of Companies
5707 Corsa Ave, Suite 200, Westlake Village, CA 91362
P:818.223.4388 F:818.591.1450

No warranty or representation is made to the accuracy of the foregoing information. Terms of sale or lease and availability are subject to change or withdrawal without notice.

PRIME WARNER CENTER OFFICE SPACE FOR LEASE | 6800 OWENSMOUTH AVENUE

Floorplan: Suite 200



*Not to scale

JAY RUBIN | jrubin@lee-re.com
Principal | JayRubin-RE.com
818.223.4385 | License ID# 01320005

EUGENE KIM | ekim@lee-re.com
Principal | License ID# 01521416
818.444.4919

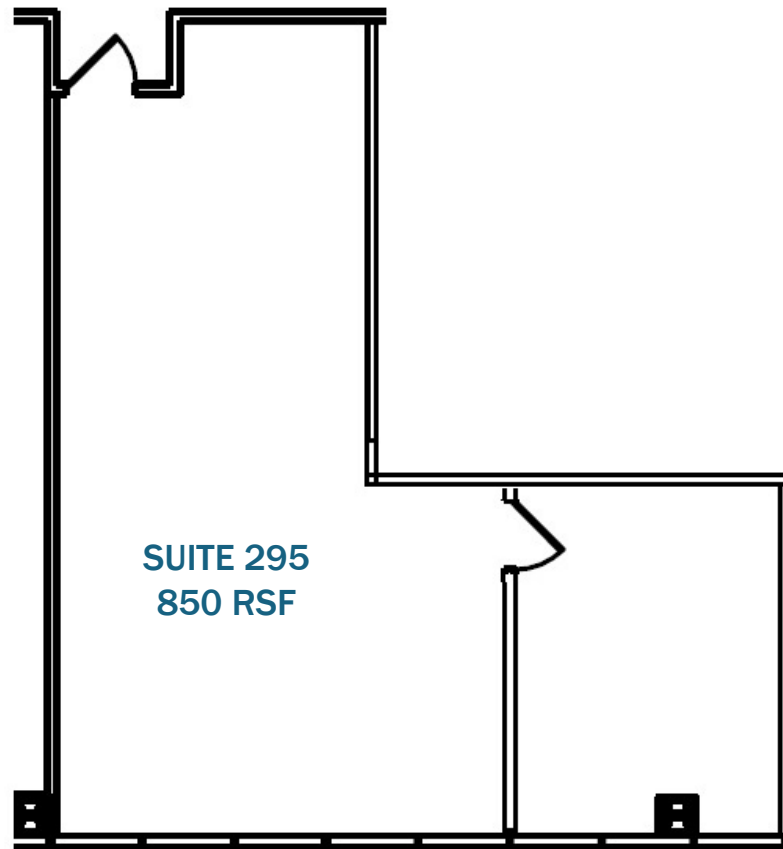


Lee & Associates® - LA North/Ventura, Inc. • Corporate ID #01191898
A Member of the Lee & Associates® Group of Companies
5707 Corsa Ave, Suite 200, Westlake Village, CA 91362
P:818.223.4388 F:818.591.1450

No warranty or representation is made to the accuracy of the foregoing information. Terms of sale or lease and availability are subject to change or withdrawal without notice.

PRIME WARNER CENTER OFFICE SPACE FOR LEASE | 6800 OWENSMOUTH AVENUE

Floorplan: Suite 295



*Not to scale

JAY RUBIN | jrubin@lee-re.com
Principal | JayRubin-RE.com
818.223.4385 | License ID# 01320005

EUGENE KIM | ekim@lee-re.com
Principal | License ID# 01521416
818.444.4919

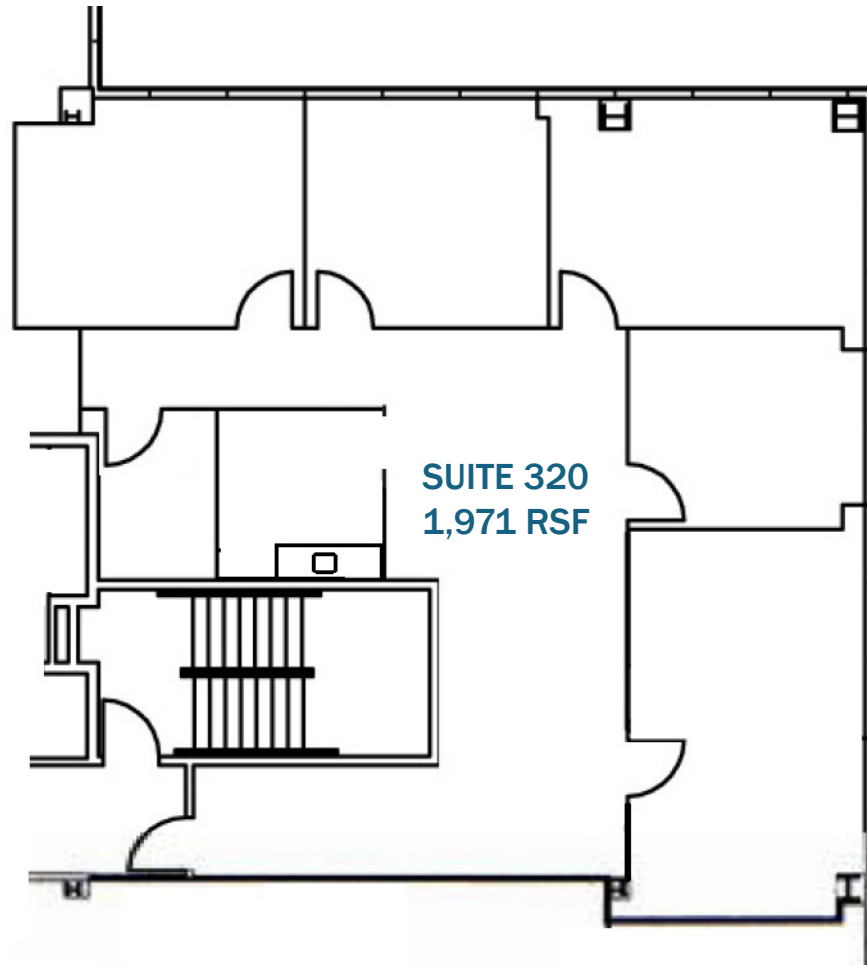


Lee & Associates® - LA North/Ventura, Inc. • Corporate ID #01191898
A Member of the Lee & Associates® Group of Companies
5707 Corsa Ave, Suite 200, Westlake Village, CA 91362
P:818.223.4388 F:818.591.1450

No warranty or representation is made to the accuracy of the foregoing information. Terms of sale or lease and availability are subject to change or withdrawal without notice.

PRIME WARNER CENTER OFFICE SPACE FOR LEASE | 6800 OWENSMOUTH AVENUE

Floorplan: Suite 320



*Not to scale

JAY RUBIN | jrubin@lee-re.com
Principal | JayRubin-RE.com
818.223.4385 | License ID# 01320005

EUGENE KIM | ekim@lee-re.com
Principal | License ID# 01521416
818.444.4919

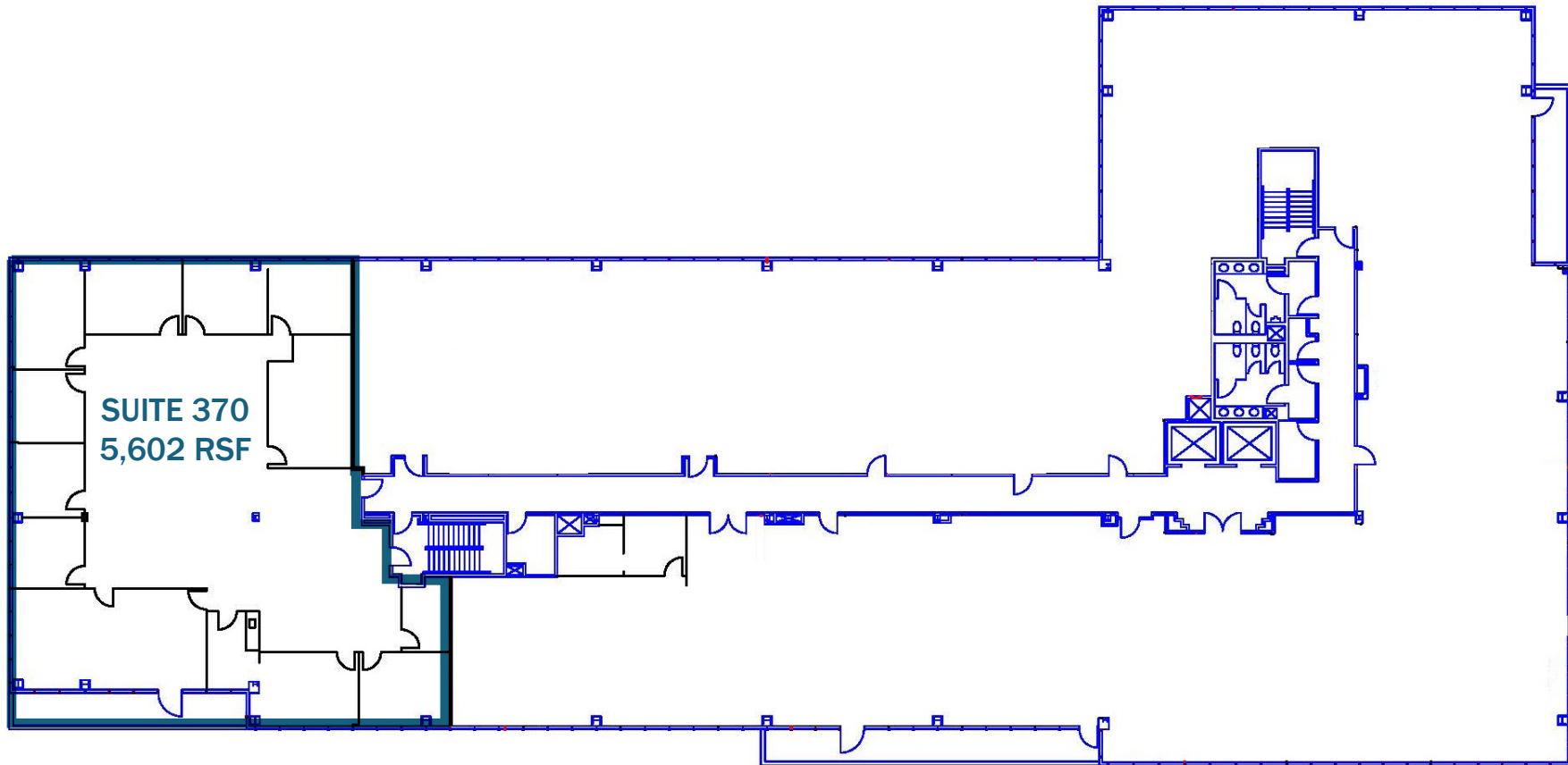


Lee & Associates® - LA North/Ventura, Inc. • Corporate ID #01191898
A Member of the Lee & Associates® Group of Companies
5707 Corsa Ave, Suite 200, Westlake Village, CA 91362
P:818.223.4388 F:818.591.1450

No warranty or representation is made to the accuracy of the foregoing information. Terms of sale or lease and availability are subject to change or withdrawal without notice.

PRIME WARNER CENTER OFFICE SPACE FOR LEASE | 6800 OWENSMOUTH AVENUE

Floorplan: 3rd Floor



*Not to scale

JAY RUBIN | jrubin@lee-re.com
Principal | JayRubin-RE.com
818.223.4385 | License ID# 01320005

EUGENE KIM | ekim@lee-re.com
Principal | License ID# 01521416
818.444.4919

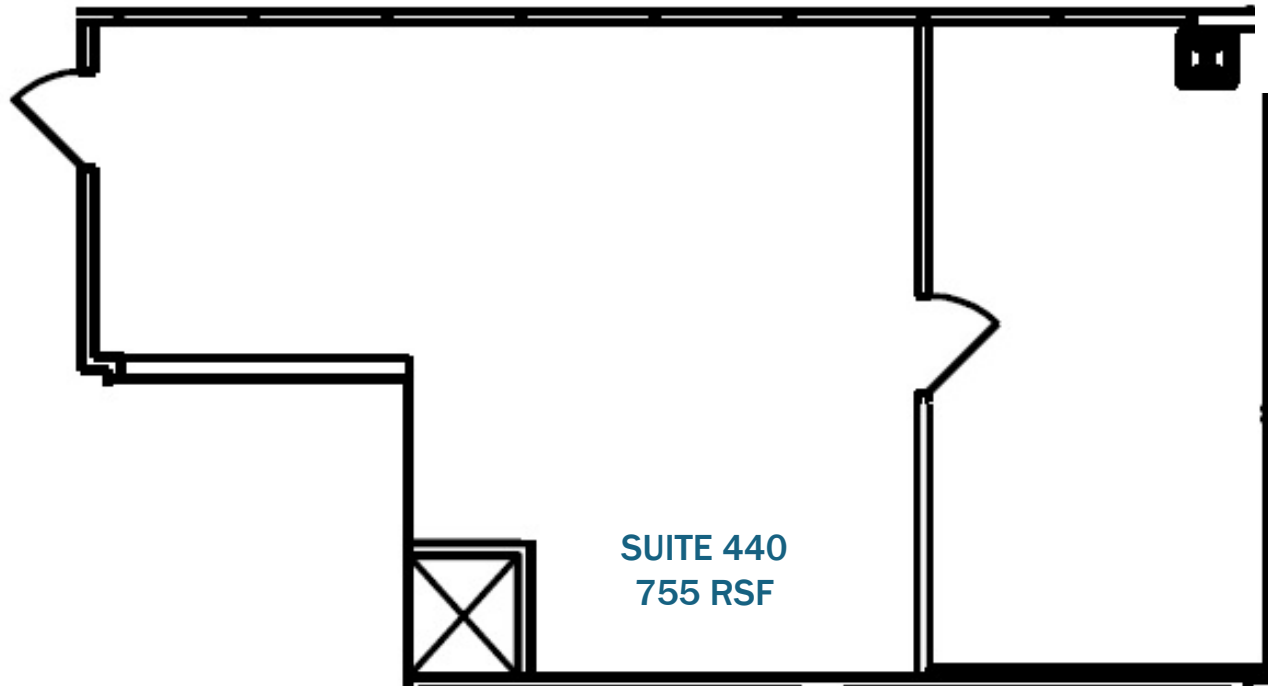


Lee & Associates® - LA North/Ventura, Inc. • Corporate ID #01191898
A Member of the Lee & Associates® Group of Companies
5707 Corsa Ave, Suite 200, Westlake Village, CA 91362
P:818.223.4388 F:818.591.1450

No warranty or representation is made to the accuracy of the foregoing information. Terms of sale or lease and availability are subject to change or withdrawal without notice.

PRIME WARNER CENTER OFFICE SPACE FOR LEASE | 6800 OWENSMOUTH AVENUE

Floorplan: Suite 440



*Not to scale

JAY RUBIN | jrubin@lee-re.com
Principal | JayRubin-RE.com
818.223.4385 | License ID# 01320005

EUGENE KIM | ekim@lee-re.com
Principal | License ID# 01521416
818.444.4919



Lee & Associates® - LA North/Ventura, Inc. • Corporate ID #01191898
A Member of the Lee & Associates® Group of Companies
5707 Corsa Ave, Suite 200, Westlake Village, CA 91362
P:818.223.4388 F:818.591.1450

No warranty or representation is made to the accuracy of the foregoing information. Terms of sale or lease and availability are subject to change or withdrawal without notice.

PRIME WARNER CENTER OFFICE SPACE FOR LEASE | 6800 OWENSMOUTH AVENUE

For leasing information
please contact:

JAY RUBIN
Principal
818.223.4385
jrubin@lee-re.com
JayRubin-RE.com
License ID# 01320005

EUGENE KIM
Principal
818.444.4919
ekim@lee-re.com
License ID# 01521416



LEE & ASSOCIATES
COMMERCIAL REAL ESTATE SERVICES

Lee & Associates®
LA North/Ventura, Inc.
Corporate ID #01191898
A Member of the Lee & Associates®
Group of Companies
5707 Corsa Ave, Suite 200
Westlake Village, CA 91362
P:818.223.4388 F:818.591.1450
www.lee-associates.com

No warranty or representation is made to the accuracy of the foregoing information. Terms of sale or lease and availability are subject to change or withdrawal without notice.