

# West Hills Plaza

20700 Ventura Blvd | Woodland Hills | California



Westhills Plaza

JAY RUBIN  
Principal  
818.223.4385  
jrubin@lee-re.com  
JayRubin-RE.com  
License ID# 01320005

SCOTT ROMICK  
Principal  
818.933.0305  
sromick@lee-re.com  
License ID# 01323527

EUGENE KIM  
Principal  
818.444.4919  
ekim@lee-re.com  
License ID# 01521416

DARREN CASAMASSIMA  
Principal  
818.933.0303  
dc@lee-re.com  
License ID# 01425638

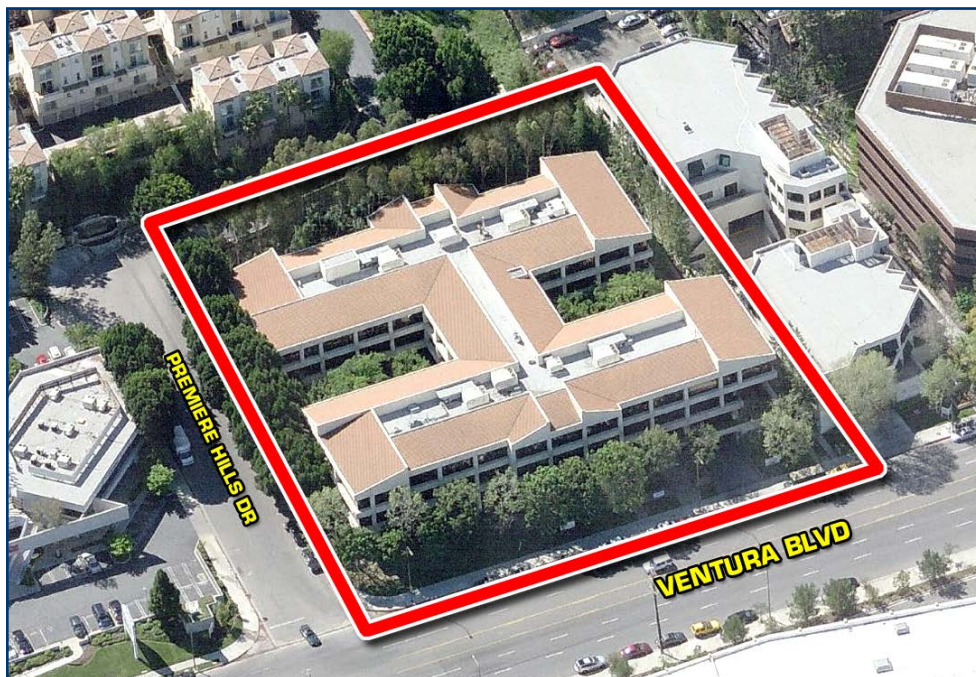
**LEE & ASSOCIATES**  
COMMERCIAL REAL ESTATE SERVICES

Lee & Associates® - LA North/Ventura, Inc. • Corporate ID #01191898  
A Member of the Lee & Associates® Group of Companies  
5707 Corso Ave, Suite 200, Westlake Village, CA 91362  
P: 818.223.4388 F: 818.591.1450

No warranty or representation is made to the accuracy of the foregoing information. Terms of sale or lease and availability are subject to change or withdrawal without notice.



# Office Space Available For Lease | 20700 Ventura Blvd | Woodland Hills



## PROPERTY DETAILS

ADDRESS	20700 Ventura Blvd Woodland Hills, CA 91364
AVAILABILITY	Suite 140: 3,041 RSF Suite 200: 896 RSF Suite 203: 1,723 RSF Suite 215: 1,868 RSF Suite 220: 2,191 RSF Suite 225: 1,717 RSF Suite 229: 1,219 RSF Suite 231: 1,349 RSF Suite 300: 6,627 RSF Suite 302: 5,488 RSF* Suite 320: 4,050 RSF* Suite 327: 3,488 RSF Suite 328: 1,515 RSF Suite 350: 1,529 RSF Suites 302 & 320 are contiguous for 9,538 RSF*
RENTAL RATE	\$2.00 Full Service Gross
TERM	3-10 Years
PARKING	3/1,000 RSF Tandem Reserved: \$80 per car/month Single Reserved: \$110 per car/month

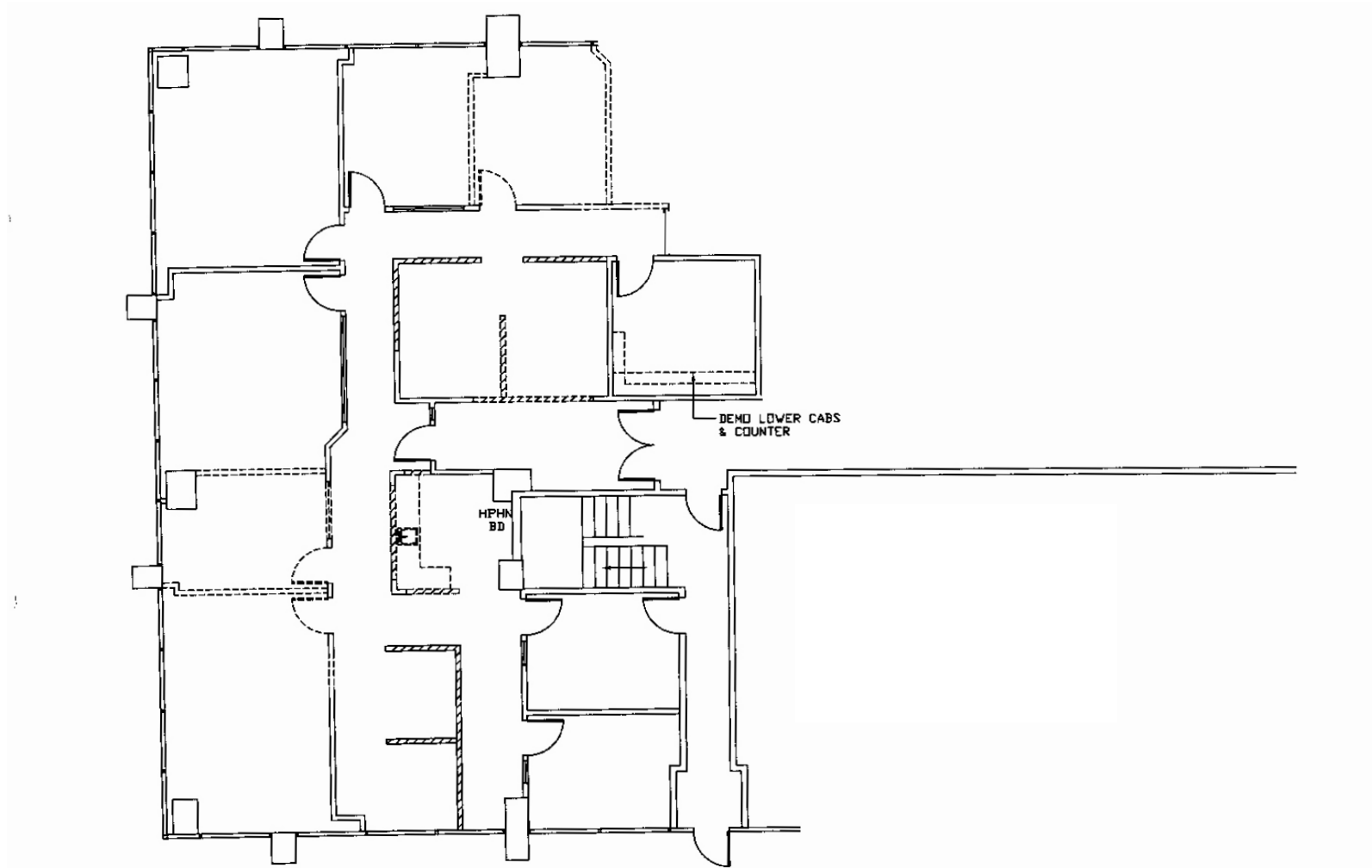
## PROPERTY HIGHLIGHTS

- HIGHLY EFFICIENT OFFICE SUITES
- GENEROUS WINDOW LINES
- ON-SITE CAFE AND SALON REPUBLIC
- EASY ACCESS TO 101 FREEWAY

No warranty or representation is made to the accuracy of the foregoing information. Terms of sale or lease and availability are subject to change or withdrawal without notice.

# Office Space Available For Lease | 20700 Ventura Blvd | Woodland Hills

Floorplan: Suite 140 - 3,041 RSF



\*Not to scale

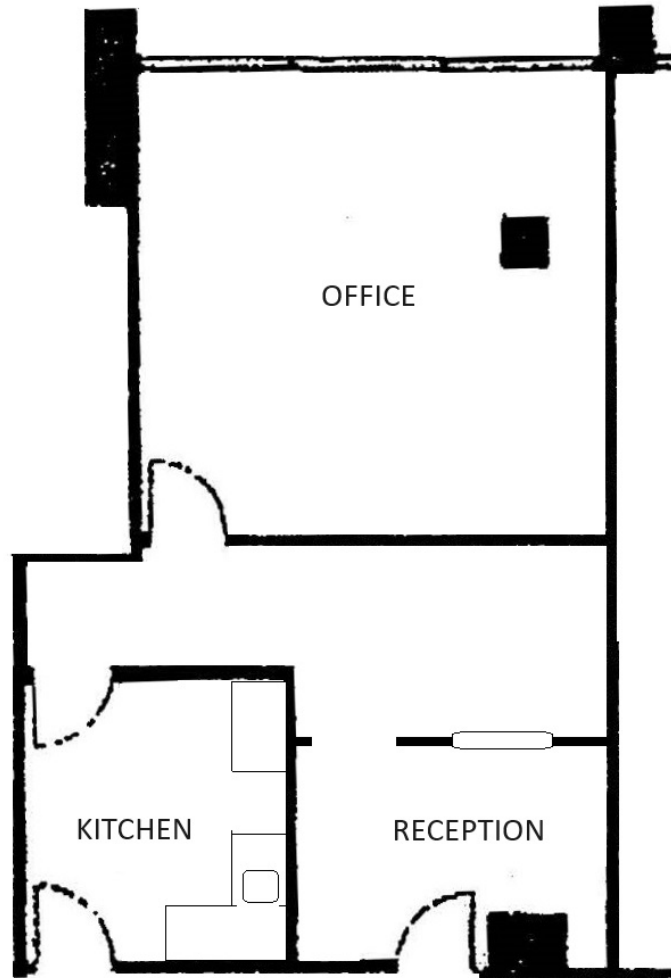


Lee & Associates® - LA North/Ventura, Inc. • Corporate ID #01191898  
A Member of the Lee & Associates® Group of Companies  
5707 Corsa Ave, Suite 200, Westlake Village, CA 91362  
P:818.223.4388 F:818.591.1450

No warranty or representation is made to the accuracy of the foregoing information. Terms of sale or lease and availability are subject to change or withdrawal without notice.

# Office Space Available For Lease | 20700 Ventura Blvd | Woodland Hills

Floorplan: Suite 200 - 879 RSF



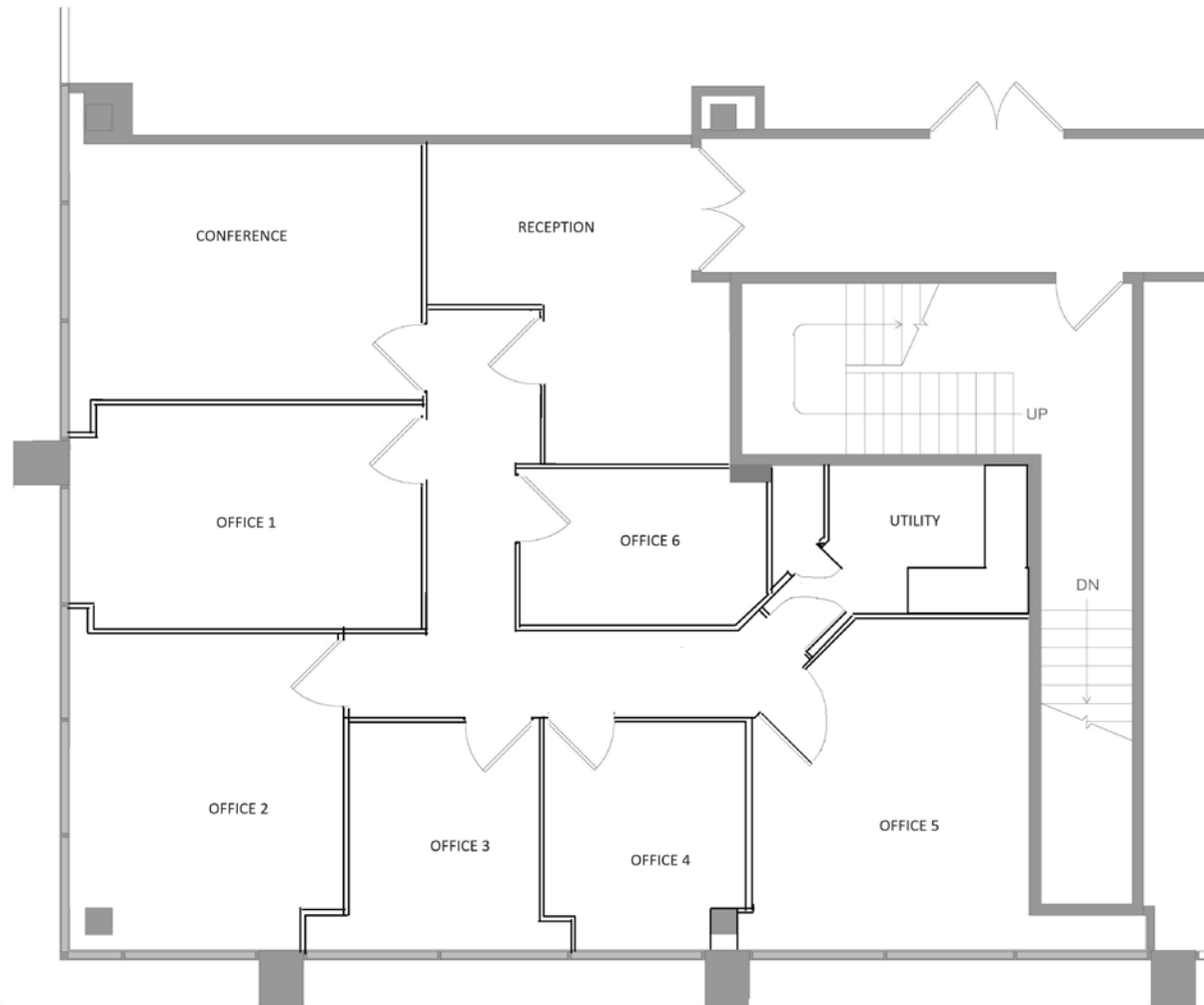
\*Not to scale



Lee & Associates® - LA North/Ventura, Inc. • Corporate ID #01191898  
A Member of the Lee & Associates® Group of Companies  
5707 Corsa Ave, Suite 200, Westlake Village, CA 91362  
P:818.223.4388 F:818.591.1450

# Office Space Available For Lease | 20700 Ventura Blvd | Woodland Hills

Floorplan: Suite 203 - 1,723 RSF



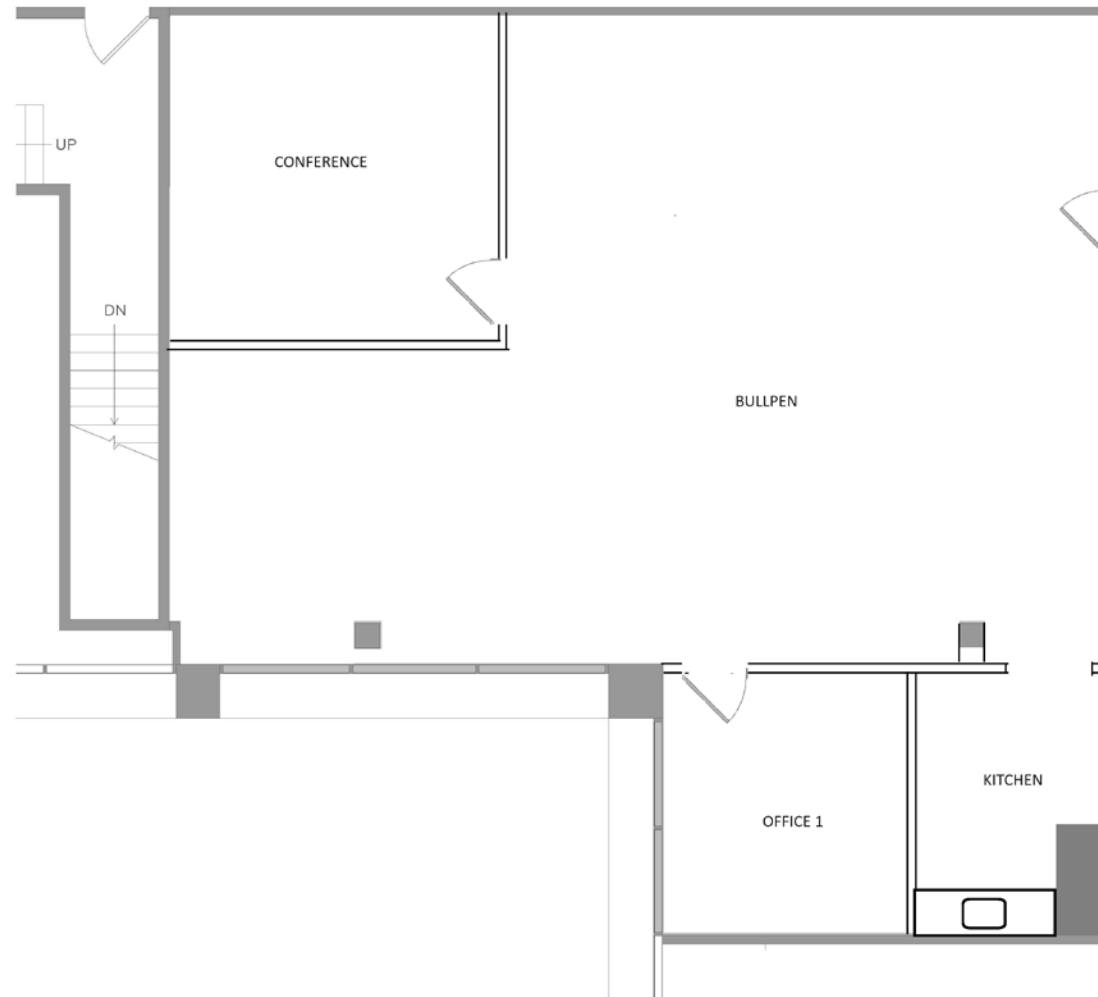
\*Not to scale



Lee & Associates® - LA North/Ventura, Inc. • Corporate ID #01191898  
A Member of the Lee & Associates® Group of Companies  
5707 Corsa Ave, Suite 200, Westlake Village, CA 91362  
P:818.223.4388 F:818.591.1450

# Office Space Available For Lease | 20700 Ventura Blvd | Woodland Hills

Floorplan: Suite 215 - 1,868 RSF



\*Not to scale

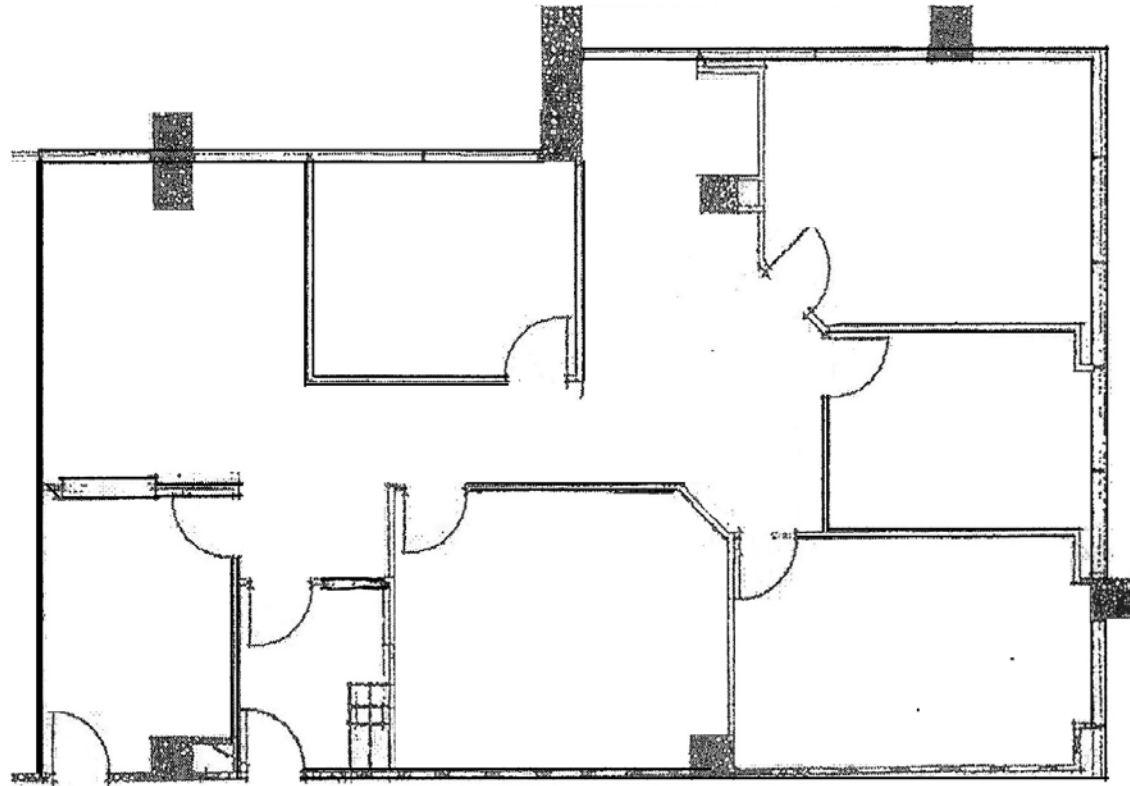


Lee & Associates® - LA North/Ventura, Inc. • Corporate ID #01191898  
A Member of the Lee & Associates® Group of Companies  
5707 Corsa Ave, Suite 200, Westlake Village, CA 91362  
P:818.223.4388 F:818.591.1450

No warranty or representation is made to the accuracy of the foregoing information. Terms of sale or lease and availability are subject to change or withdrawal without notice.

# Office Space Available For Lease | 20700 Ventura Blvd | Woodland Hills

Floorplan: Suite 220 - 2,191 RSF



\*Not to scale

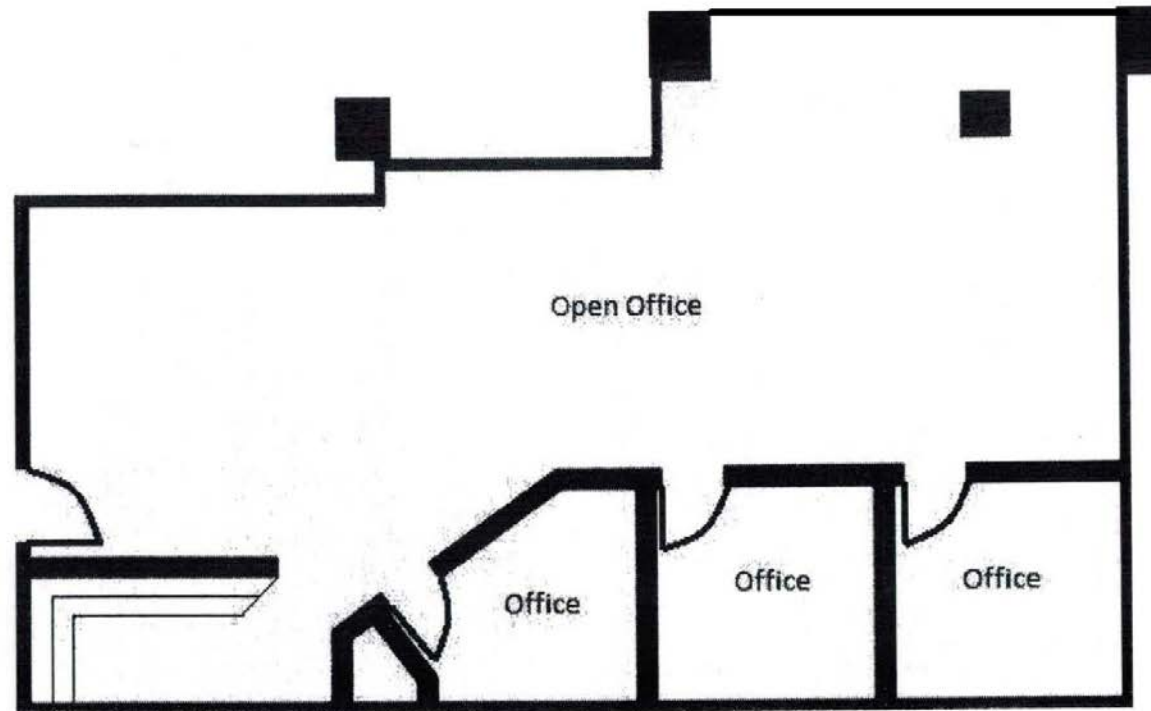


Lee & Associates® - LA North/Ventura, Inc. • Corporate ID #01191898  
A Member of the Lee & Associates® Group of Companies  
5707 Corsa Ave, Suite 200, Westlake Village, CA 91362  
P:818.223.4388 F:818.591.1450

No warranty or representation is made to the accuracy of the foregoing information. Terms of sale or lease and availability are subject to change or withdrawal without notice.

# Office Space Available For Lease | 20700 Ventura Blvd | Woodland Hills

Floorplan: Suite 225 - 1,717 RSF



\*Not to scale

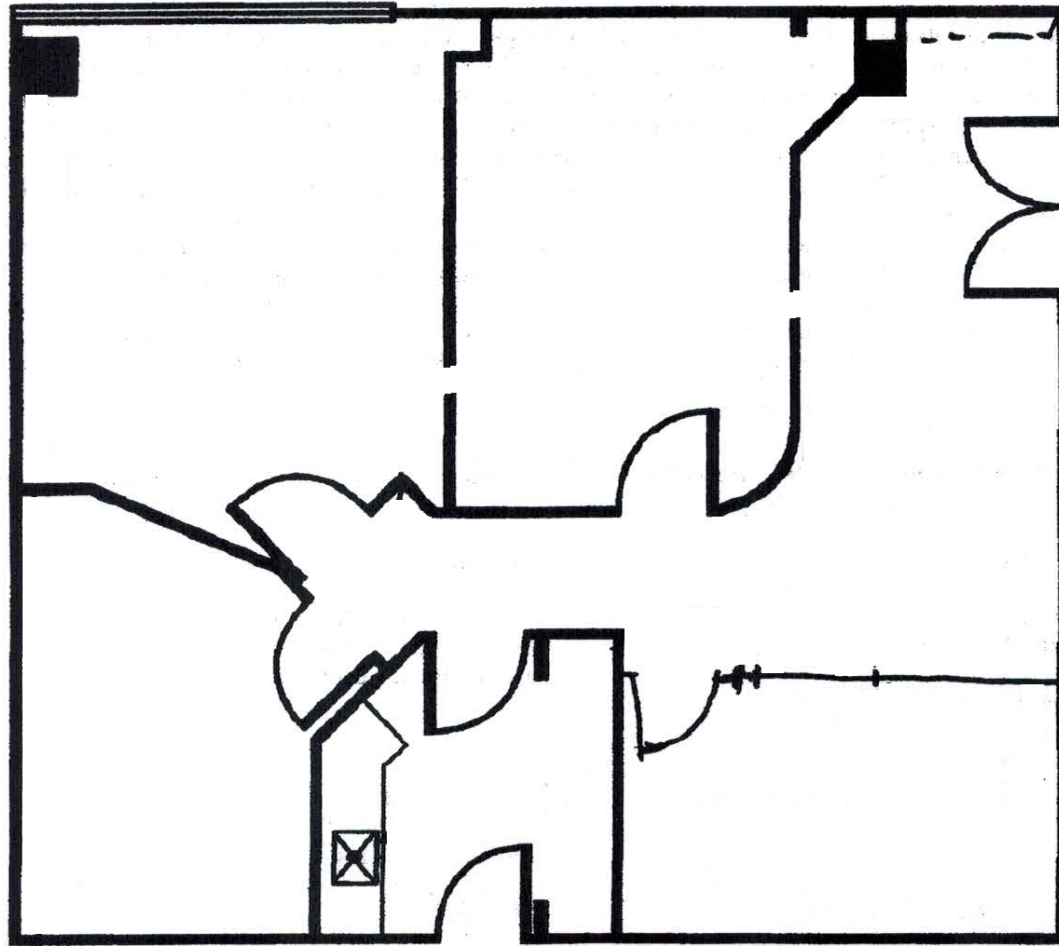


Lee & Associates® - LA North/Ventura, Inc. • Corporate ID #01191898  
A Member of the Lee & Associates® Group of Companies  
5707 Corsa Ave, Suite 200, Westlake Village, CA 91362  
P:818.223.4388 F:818.591.1450



# Office Space Available For Lease | 20700 Ventura Blvd | Woodland Hills

Floorplan: Suite 229 - 1,219 RSF



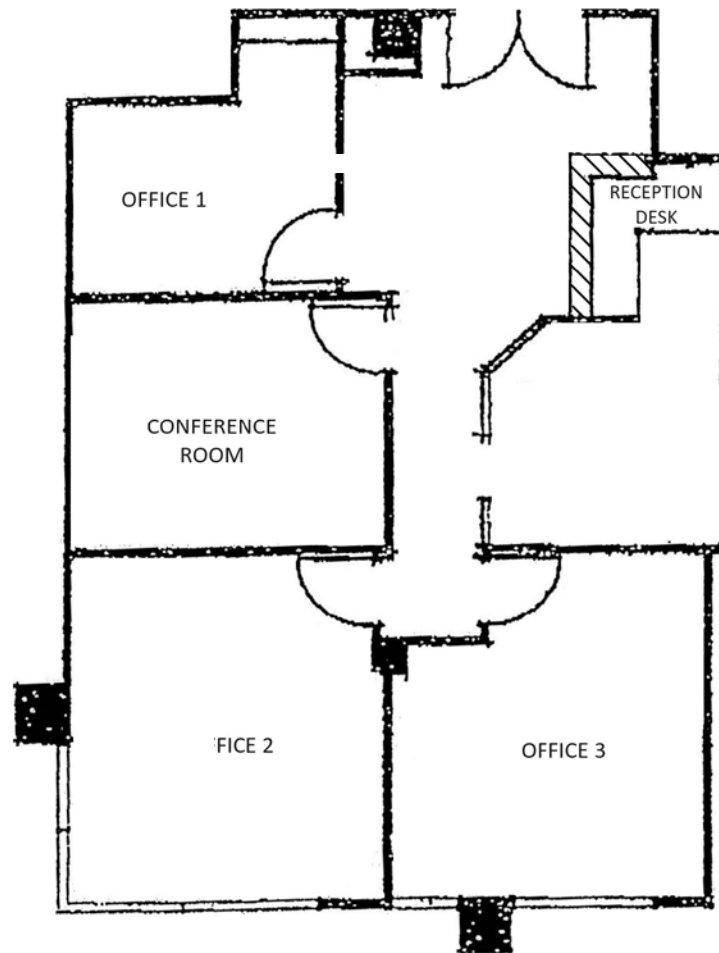
\*Not to scale



Lee & Associates® - LA North/Ventura, Inc. • Corporate ID #01191898  
A Member of the Lee & Associates® Group of Companies  
5707 Corsa Ave, Suite 200, Westlake Village, CA 91362  
P:818.223.4388 F:818.591.1450

# Office Space Available For Lease | 20700 Ventura Blvd | Woodland Hills

Floorplan: Suite 231 - 1,349 RSF



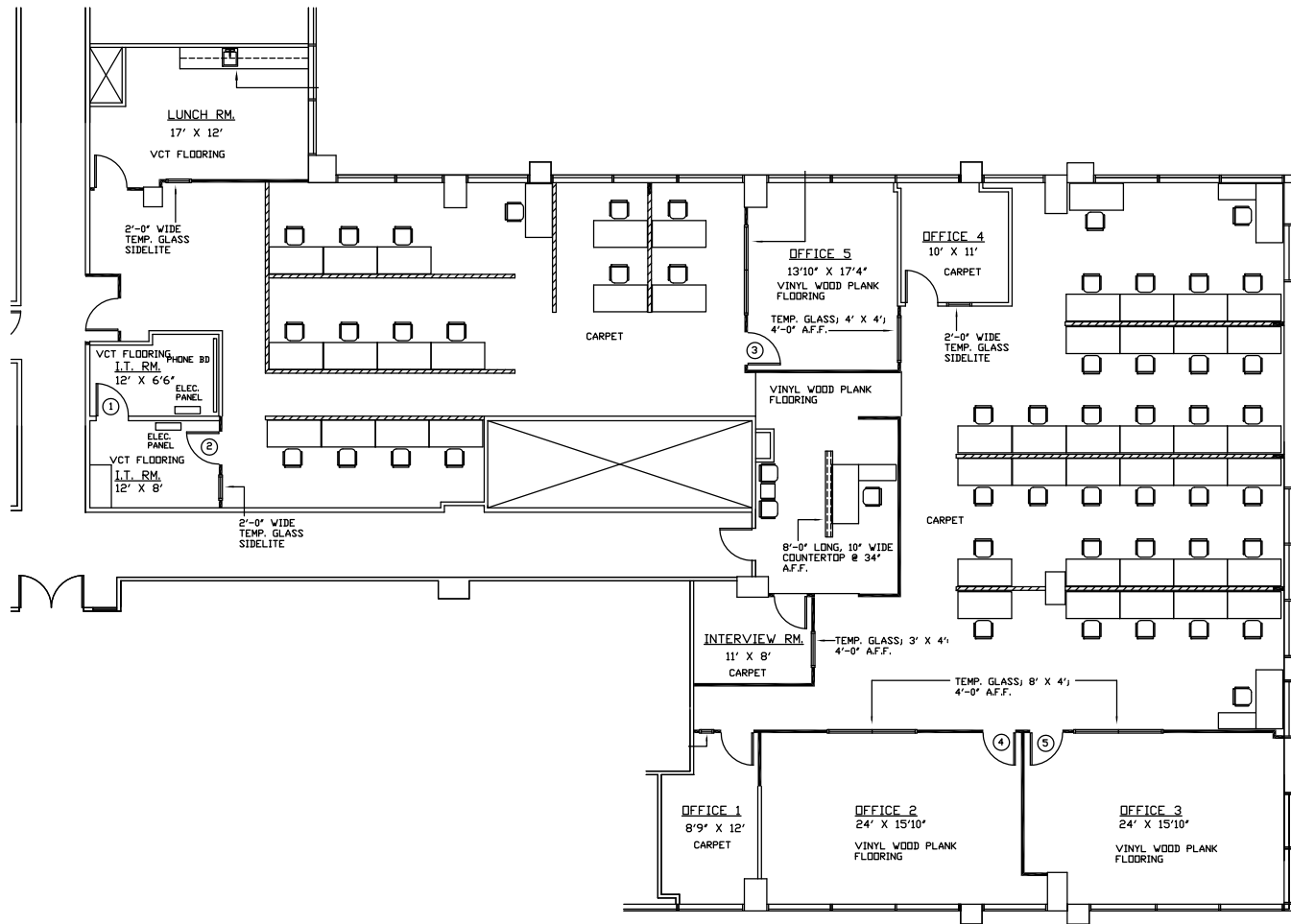
\*Not to scale



Lee & Associates® - LA North/Ventura, Inc. • Corporate ID #01191898  
A Member of the Lee & Associates® Group of Companies  
5707 Corsa Ave, Suite 200, Westlake Village, CA 91362  
P:818.223.4388 F:818.591.1450

# Office Space Available For Lease | 20700 Ventura Blvd | Woodland Hills

## Floorplan: Suite 300 - 6,627 RSF



\*Not to scale

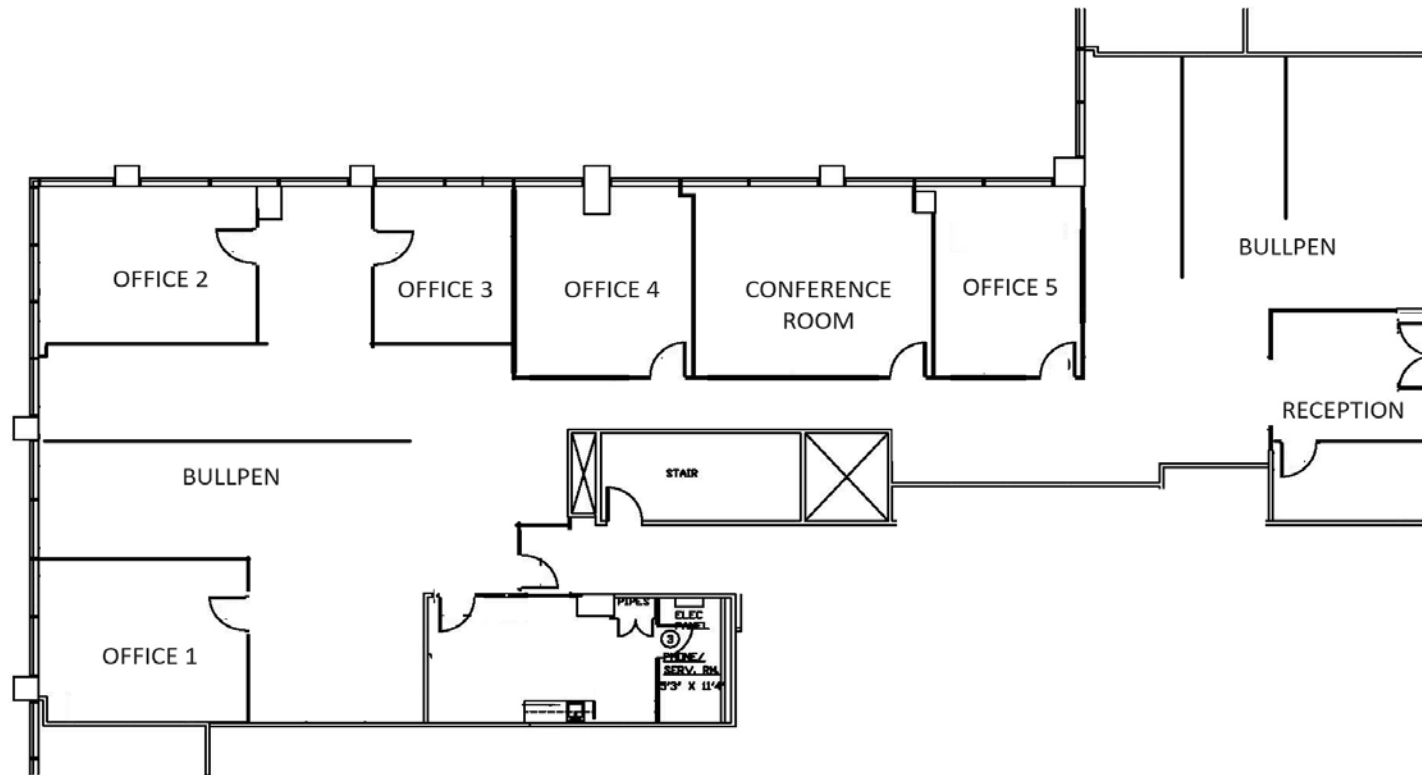


Lee & Associates® - LA North/Ventura, Inc. • Corporate ID #01191898  
A Member of the Lee & Associates® Group of Companies  
5707 Corsa Ave, Suite 200, Westlake Village, CA 91362  
P:818.223.4388 F:818.591.1450



# Office Space Available For Lease | 20700 Ventura Blvd | Woodland Hills

Floorplan: Suite 302 - 5,488 RSF



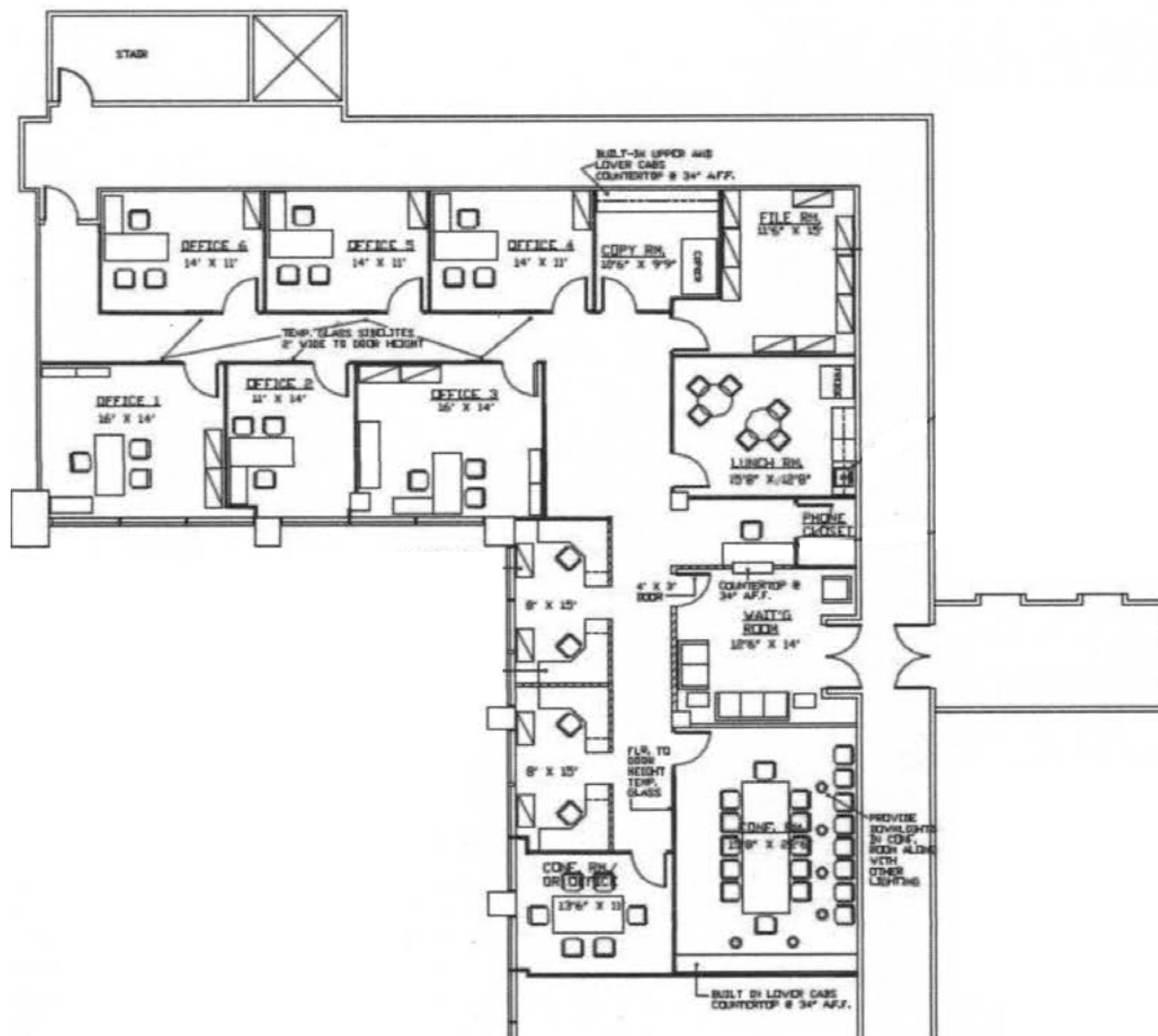
\*Not to scale



Lee & Associates® - LA North/Ventura, Inc. • Corporate ID #01191898  
A Member of the Lee & Associates® Group of Companies  
5707 Corsa Ave, Suite 200, Westlake Village, CA 91362  
P:818.223.4388 F:818.591.1450

# Office Space Available For Lease | 20700 Ventura Blvd | Woodland Hills

Floorplan: Suite 320 - 4,050 RSF



\*Not to scale

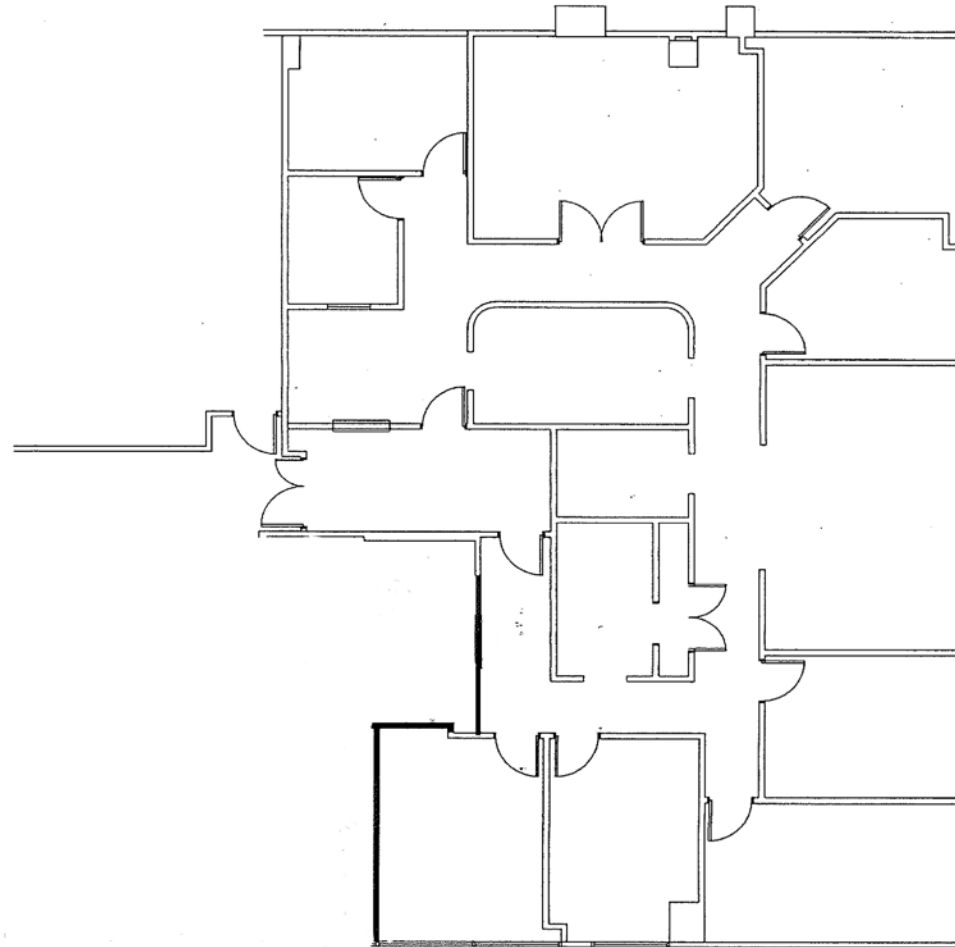


Lee & Associates - LA North/Ventura, Inc. • Corporate ID #01191898  
A Member of the Lee & Associates® Group of Companies  
5707 Corsa Ave, Suite 200, Westlake Village, CA 91362  
P:818.223.4388 F:818.591.1450

No warranty or representation is made to the accuracy of the foregoing information. Terms of sale or lease and availability are subject to change or withdrawal without notice.

# Office Space Available For Lease | 20700 Ventura Blvd | Woodland Hills

Floorplan: Suite 327 - 3,488 RSF



\*Not to scale

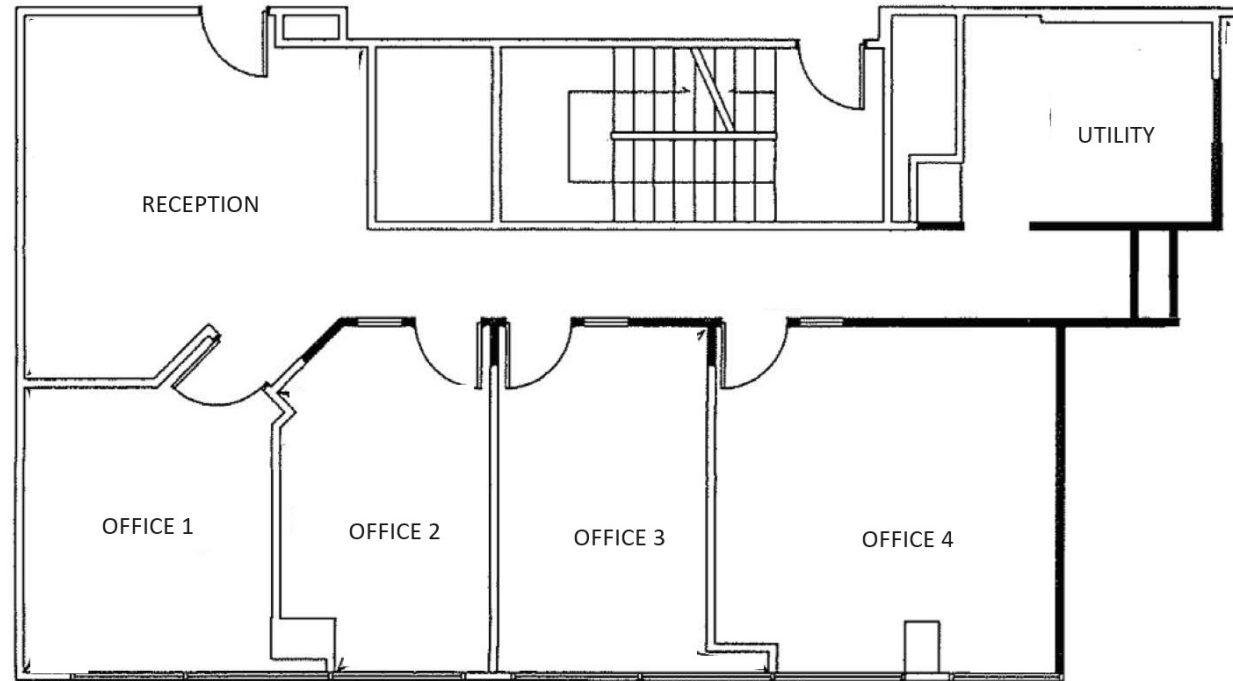


Lee & Associates® - LA North/Ventura, Inc. • Corporate ID #01191898  
A Member of the Lee & Associates® Group of Companies  
5707 Corsa Ave, Suite 200, Westlake Village, CA 91362  
P:818.223.4388 F:818.591.1450



# Office Space Available For Lease | 20700 Ventura Blvd | Woodland Hills

Floorplan: Suite 328 - 1,515 RSF



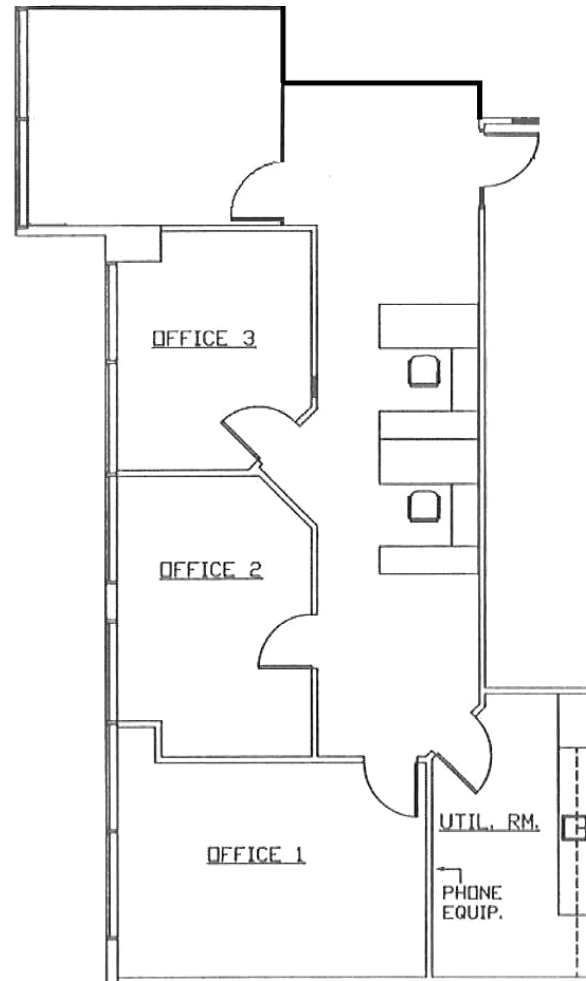
\*Not to scale



Lee & Associates® - LA North/Ventura, Inc. • Corporate ID #01191898  
A Member of the Lee & Associates® Group of Companies  
5707 Corsa Ave, Suite 200, Westlake Village, CA 91362  
P:818.223.4388 F:818.591.1450

# Office Space Available For Lease | 20700 Ventura Blvd | Woodland Hills

Floorplan: Suite 350 - 1,529 RSF



\*Not to scale



Lee & Associates® - LA North/Ventura, Inc. • Corporate ID #01191898  
A Member of the Lee & Associates® Group of Companies  
5707 Corsa Ave, Suite 200, Westlake Village, CA 91362  
P:818.223.4388 F:818.591.1450



# Office Space Available For Lease | 20700 Ventura Blvd | Woodland Hills



Lee & Associates® - LA North/Ventura, Inc. • Corporate ID #01191898  
 A Member of the Lee & Associates® Group of Companies  
 5707 Corsa Ave, Suite 200, Westlake Village, CA 91362  
 P:818.223.4388 F:818.591.1450