

21200-21204 Erwin Street



Free Standing Building for Lease / Prime Warner Center
21200-21204 Erwin Street
Woodland Hills, CA

Jay Rubin, Principal
818.223.4385
jrubin@lee-re.com
BRE# 01320005

 **LEE & ASSOCIATES**
COMMERCIAL REAL ESTATE SERVICES
CORP ID 01191898

No warranty or representation is made to the accuracy of the foregoing information. Terms of sale or lease and availability are subject to change or withdrawal without notice.

21200-21204 Erwin Street

Woodland Hills, CA

Free Standing Building for Lease Prime Warner Center



PROPERTY DETAILS

21200-21024 Erwin St

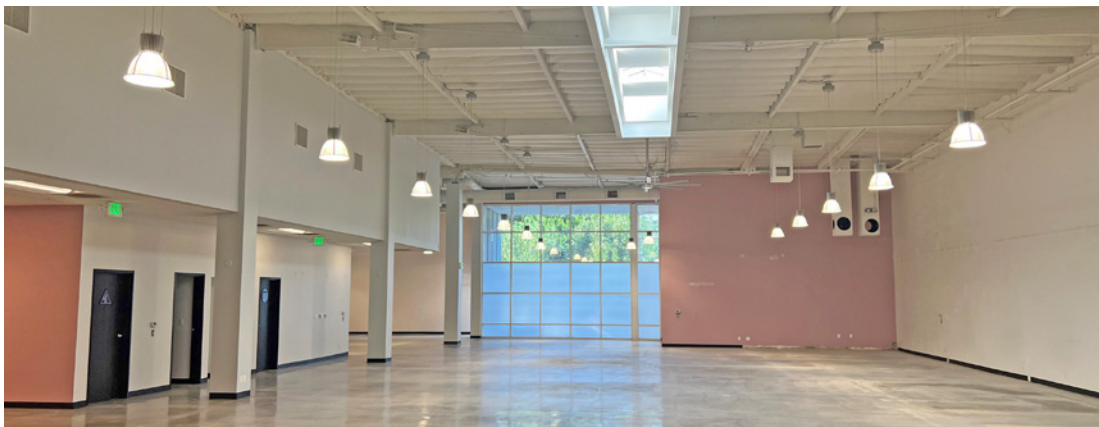
Available: 21,025 Rentable Square Feet
Lease Rate: \$2.40 per RSF, Modified Gross
Parking: 3/1,000

21200 Erwin Street

Available: 9,895 Rentable Square Feet

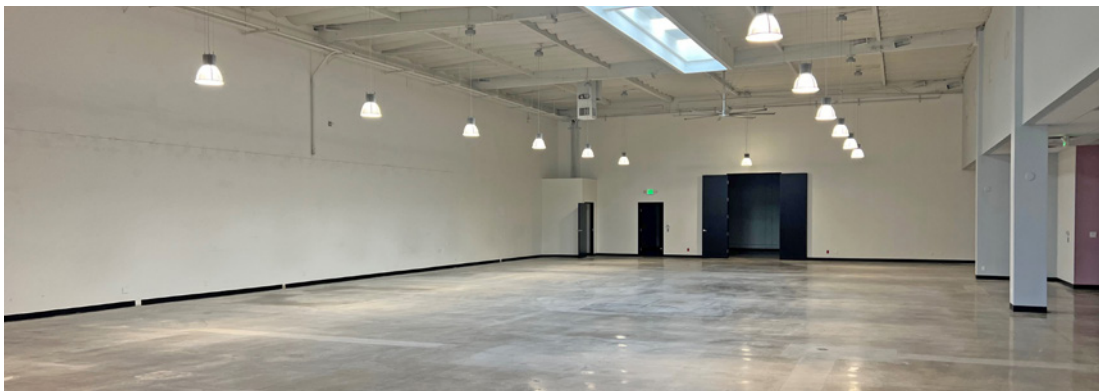
21204 Erwin Street

Available: 11,130 Rentable Square Feet



PROPERTY HIGHLIGHTS

- Prestigious location in the Heart of Warner Center
- Free Standing Building
- Dramatic high ceilings
- Sky lights
- Building signage
- Connected with AT&T fiber
- Modern buildout



21200 Erwin Street

Woodland Hills, CA

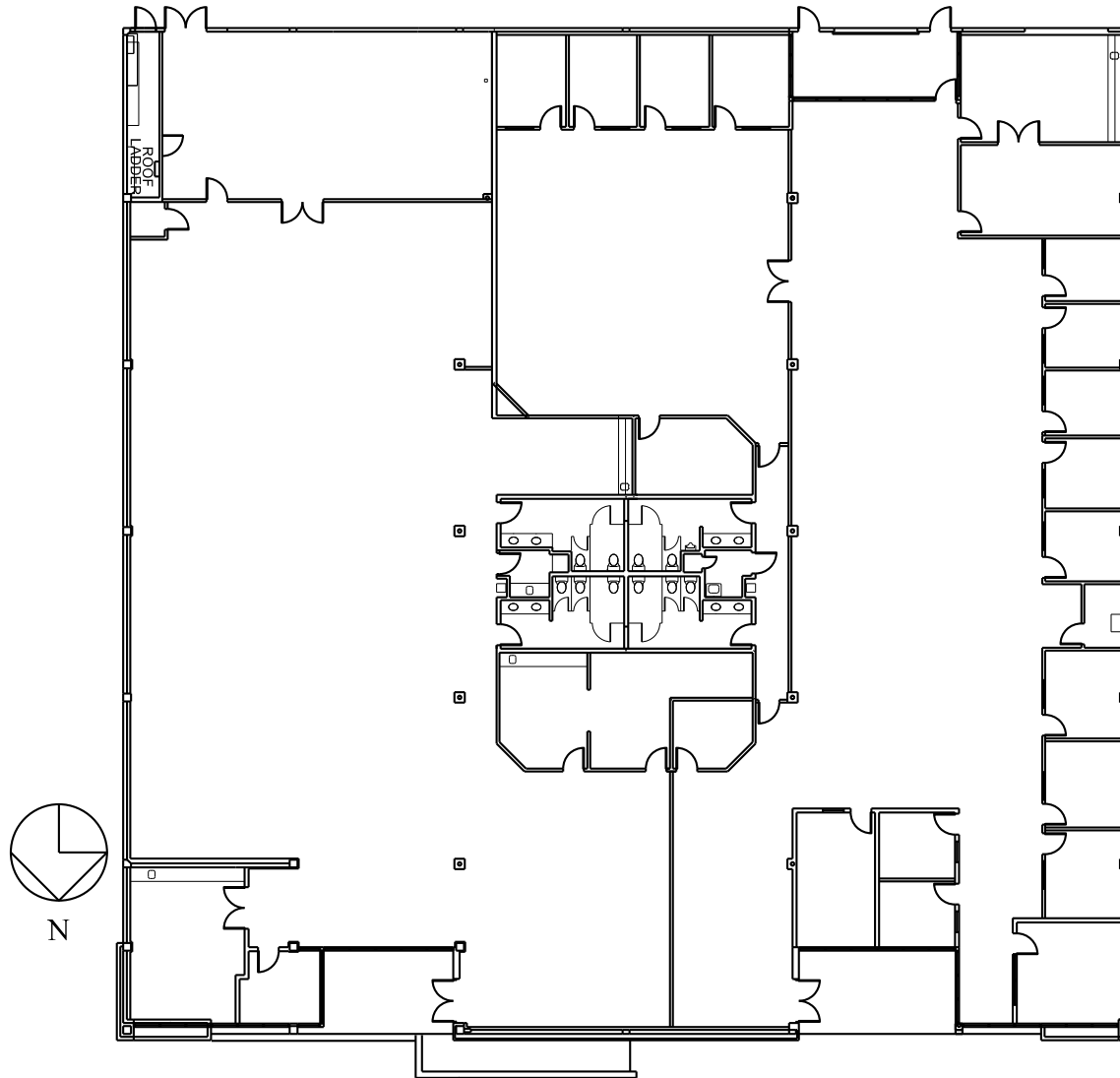
Free Standing Building for Lease

Prime Warner Center

FLOORPLAN

21200 Erwin Street

21204 Erwin Street



*Not to scale

21200-21204 Erwin Street

Woodland Hills, CA

Free Standing Building for Lease

Prime Warner Center



LEASING INFORMATION

Jay Rubin

Principal

818.223.4385

jrubin@lee-re.com

BRE# 01320005



COMMERCIAL REAL ESTATE SERVICES

Lee & Associates® - LA North/Ventura, Inc.

Corporate ID #01191898

A Member of the Lee & Associates®

Group of Companies

5707 Corsa Ave., Suite 200

Westlake Village, CA 91302

P:818.223.4388 F:818.591.1450

Rev.10-17-002023