

4730 WOODMAN AVENUE SHERMAN OAKS, CA



**Sherman Oaks
Office Suites For Lease**

JAY RUBIN
PRINCIPAL
818.223.4385
jrubin@lee-re.com
BRE# 01320005
www.JayRubin-RE.com

JENNIFER DONALDSON
PRINCIPAL
818.933.0347
jdonaldson@lee-re.com
BRE# 01317737

 **LEE &
ASSOCIATES**
Corporate ID #01191898



PROPERTY DETAILS

Lease Rate: \$2.65 PRSF Full Service Gross

Parking: \$65 Per Car/Month

PROPERTY HIGHLIGHTS

- Modern Renovations
- Highly Improved Suites
- Easy Access to 405 & 101 Freeways
- Excellent Window Line
- On-Site Property Management
- Parking Attendant
- AT&T Fiber Available

LAST REMAINING AVAILABILITY

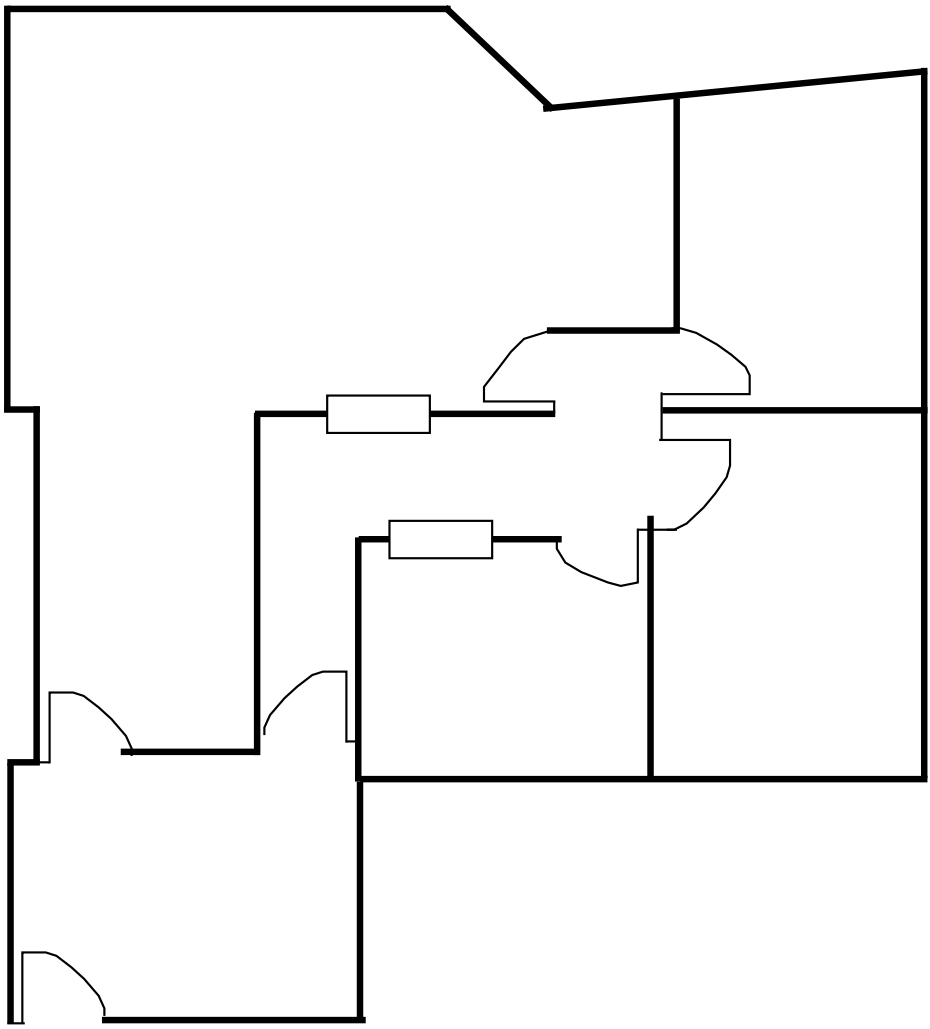
SUITE	SQ. FT.
302	1,349 RSF

4730 WOODMAN AVENUE
Sherman Oaks, CA

Sherman Oaks
Office Space For Lease

FLOORPLAN

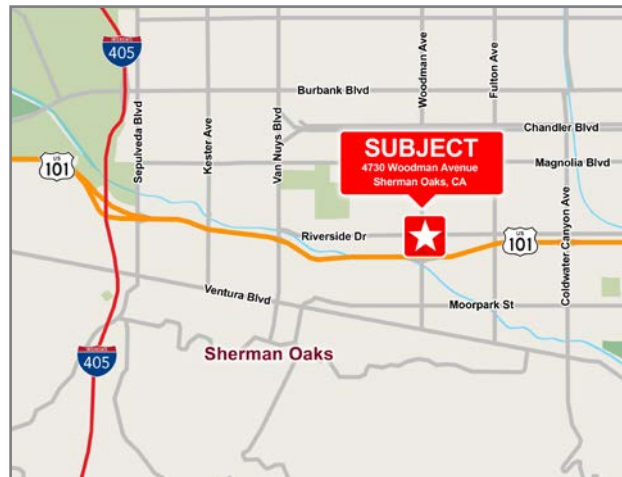
SUITE 302
1,349 SQ FT.



*Not to scale

4730 WOODMAN AVENUE Sherman Oaks, CA

Sherman Oaks Office Space For Lease



LEASING INFORMATION

JAY RUBIN

Principal
818.223.4385
jrubin@lee-re.com
BRE# 01320005

Website: www.JayRubin-RE.com

JENNIFER DONALDSON

Principal
818.933.0347
jdonaldson@lee-re.com
BRE# 01317737



Lee & Associates® - LA North/Ventura, Inc.
Corporate ID #01191898
A Member of the Lee & Associates®
Group of Companies
26050 Mureau Rd., Suite 101, Calabasas, CA 91302
P:818.223.4388 F:818.591.1450