

VENTURE PLAZA

20720 VENTURA BOULEVARD • WOODLAND HILLS, CA

COMPLETELY RENOVATED BUILDING EXTERIOR & COMMON AREAS



**Creative Woodland Hills
Office Space Available**

JAY RUBIN
PRINCIPAL
818.223.4385
jrubin@lee-re.com
DRE# 01320005

EUGENE KIM
PRINCIPAL
818.444.4919
ekim@lee-re.com

 **LEE &
ASSOCIATES**
Corporate ID #01191898

www.JayRubin-RE.com

No warranty or representation is made to the accuracy of the foregoing information. Terms of sale or lease and availability are subject to change or withdrawal without notice.

VENTURE PLAZA

20720 Ventura Boulevard • Woodland Hills, CA

Creative Woodland Hills Office Space For Lease



PROPERTY DETAILS

Lease Rate: \$1.80 RSF Full Service Gross
Parking: 3.0/1,000
\$75 per car per month

AVAILABILITY

SUITE	SQ. FT.	RATE	DETAILS
265	906 RSF	\$1.80 FSG	Available 8/1/2024

PROPERTY HIGHLIGHTS

- Brand New Modernized Common Areas
- Completely Renovated Building Exterior & Landscaping
- On-Site Property Management
- Highly Improved Office Suites
- Efficient Floor Plans
- Balconies Available on Select Suites
- New Modernized HVAC Controls and System
- Easy Access to 101 Freeway

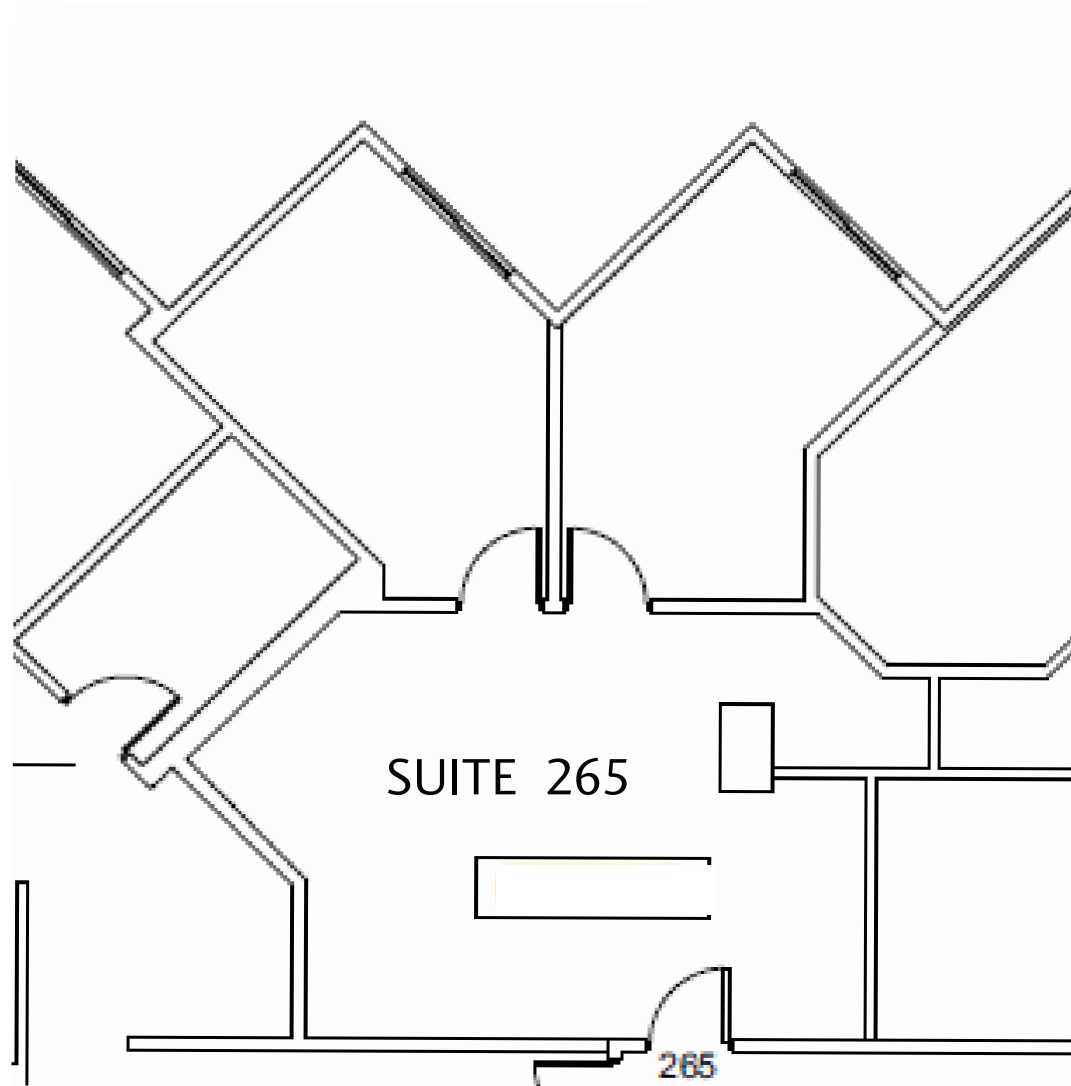


VENTURE PLAZA

20720 Ventura Boulevard • Woodland Hills, CA

Creative Woodland Hills
Office Space For Lease

SUITE 265 FLOOR PLAN

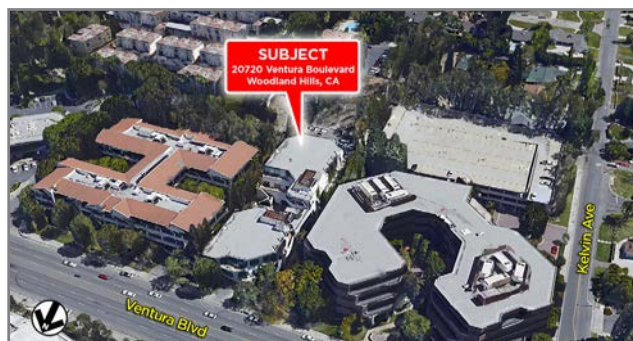


*Not to scale

VENTURE PLAZA

20720 Ventura Boulevard • Woodland Hills, CA

Creative Woodland Hills
Office Space For Lease



LEASING INFORMATION

JAY RUBIN

Principal

818.223.4385

jrubin@lee-re.com

DRE# 01320005

Website: www.JayRubin-RE.com

EUGENE KIM

Principal

818.444.4919

ekim@lee-re.com

DRE# 01521416



COMMERCIAL REAL ESTATE SERVICES

Lee & Associates® - LA North/Ventura, Inc.

Corporate ID #01191898

A Member of the Lee & Associates®

Group of Companies

5707 Corsa Ave, Suite 200, Westlake Village, CA 91362

P:818.223.4388 F:818.591.1450