

# The Landing

32107-32133 Lindero Canyon Road, Westlake Village



**LAKESIDE OFFICE SUITES AVAILABLE FOR LEASE**

**Jay Rubin**  
Principal  
818.223.4385  
jrubin@lee-re.com  
DRE# 01320005

**Jared Smits**  
Principal  
818.444.4986  
jsmits@lee-re.com  
DRE# 01839532

**Eugene Kim**  
Principal  
818.444.4919  
ekim@lee-re.com  
DRE# 01521416

 **LEE &  
ASSOCIATES**  
COMMERCIAL REAL ESTATE SERVICES



# The Landing

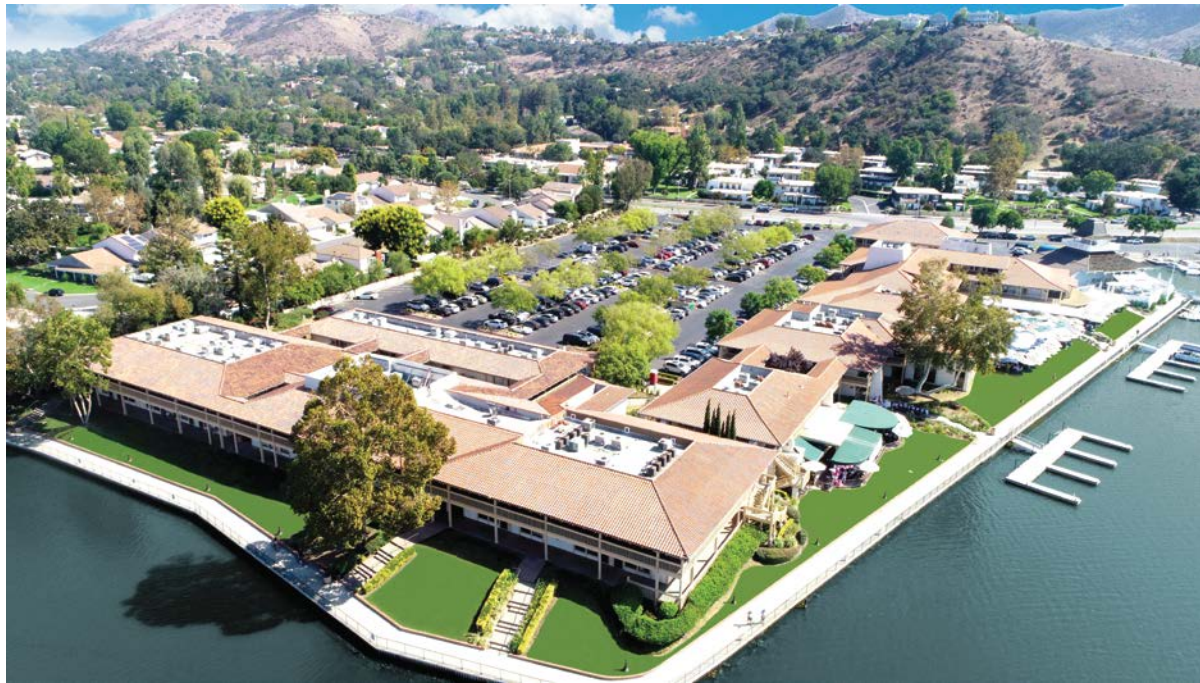
32107-32133 Lindero Canyon Road, Westlake Village

## PROPERTY DETAILS

<b>ADDRESS</b>	31207-32133 Lindero Canyon Road Westlake Village, CA 91362
<b>RENTAL RATE</b>	\$2.60 - \$3.30 / RSF, Modified Gross Fixed CAM: \$0.12 / RSF Tenant responsible for janitorial
<b>PARKING</b>	3.9/1000 RSF Free Surface Parking

## PROPERTY HIGHLIGHTS

- Charming Office and Retail Project along the shoreline of Westlake Lake
- Lakefront restaurants including Boccacio's, Zin Bistro, and The Landing Grill and Sushi Bar
- On-site Retailers, Building Management and Westlake Yacht Club
- Suites with stunning lake views
- Abundant 3.9/1000 SF of parking



### Jay Rubin

Principal  
818.223.4385  
jrubin@lee-re.com  
DRE# 01320005

### Jared Smits

Principal  
818.444.4986  
jsmits@lee-re.com  
DRE# 01839532

### Eugene Kim

Principal  
818.444.4919  
ekim@lee-re.com  
DRE# 01521416



Lee & Associates® LA North/Ventura, Inc.

5707 Corsa Ave., Ste 200 - Westlake Village, CA 91362 - Corp ID #01191898 - A Member of the Lee & Associates Group of Companies  
No warranty or representation is made to the accuracy of the foregoing information. Terms of sale or lease and availability are subject to change or withdrawal without notice.



# The Landing

32107-32133 Lindero Canyon Road, Westlake Village

## AVAILABILITY SUMMARY

### 32107 Lindero Canyon Road

SUITE	SIZE	RATE	NOTES
124	967 SF	\$2.85	
237	1,320 SF	\$3.00	Lake view office

### 32123 Lindero Canyon Road

SUITE	SIZE	RATE	NOTES
301	1,239 SF	\$2.60	Lake view office

### 32133 Lindero Canyon Road

SUITE	SIZE	RATE	NOTES
205	1,345 SF	\$3.30	Lake view, 205 & 210 contiguous for 2,388
210	1,043 SF	\$2.85	205 & 210 contiguous for 2,388



#### Jay Rubin

Principal  
818.223.4385  
jrubin@lee-re.com  
DRE# 01320005

#### Jared Smits

Principal  
818.444.4986  
jsmits@lee-re.com  
DRE# 01839532

#### Eugene Kim

Principal  
818.444.4919  
ekim@lee-re.com  
DRE# 01521416



Lee & Associates® LA North/Ventura, Inc.

5707 Corsa Ave., Ste 200 - Westlake Village, CA 91362 - Corp ID #01191898 - A Member of the Lee & Associates Group of Companies  
No warranty or representation is made to the accuracy of the foregoing information. Terms of sale or lease and availability are subject to change or withdrawal without notice.

# The Landing

32107-32133 Lindero Canyon Road, Westlake Village

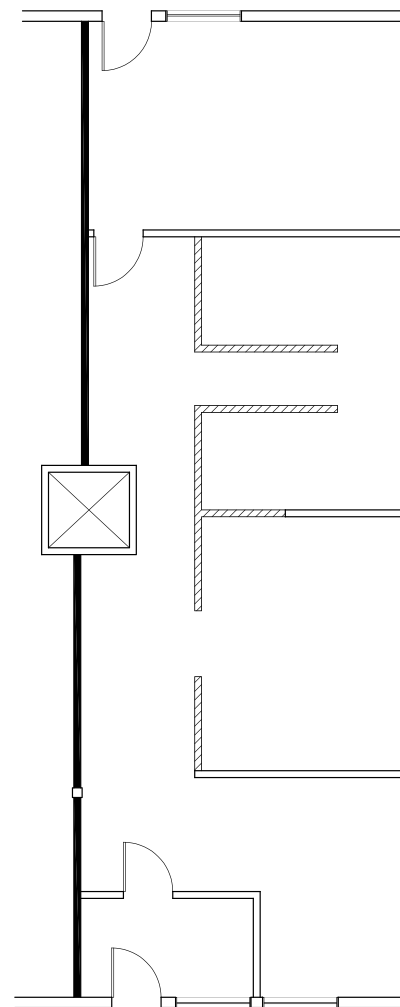
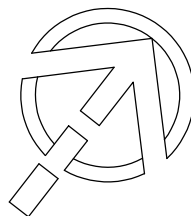
32107  
LINDERO  
CANYON ROAD

## Suite 237

1,320 SF \$3.00

Lake View Office  
Open Bullpen  
with 4 Work Stations

NORTH



SUITE  
237

### Jay Rubin

Principal  
818.223.4385  
jrubin@lee-re.com  
DRE# 01320005

### Jared Smits

Principal  
818.444.4986  
jsmits@lee-re.com  
DRE# 01839532

### Eugene Kim

Principal  
818.444.4919  
ekim@lee-re.com  
DRE# 01521416



Lee & Associates® LA North/Ventura, Inc.

5707 Corsa Ave., Ste 200 - Westlake Village, CA 91362 - Corp ID #01191898 - A Member of the Lee & Associates Group of Companies  
No warranty or representation is made to the accuracy of the foregoing information. Terms of sale or lease and availability are subject to change or withdrawal without notice.

# The Landing

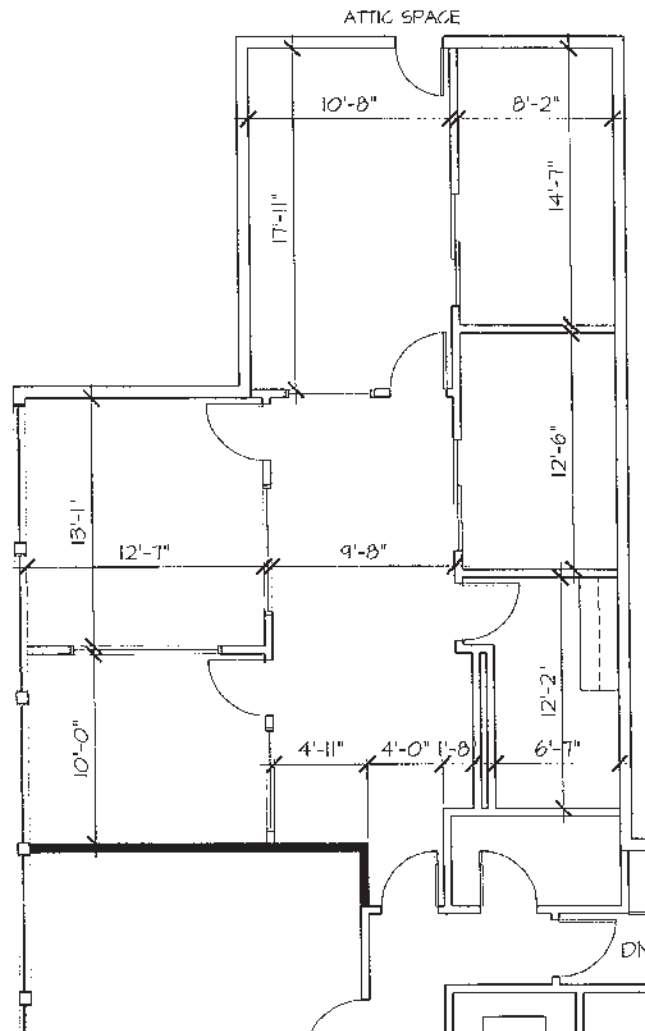
32107-32133 Lindero Canyon Road, Westlake Village

32123  
LINDERO  
CANYON ROAD

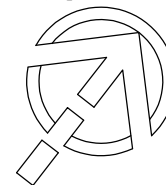
## Suite 301

1,239 SF \$2.60

Lake View  
2 Offices  
Conference Room  
Bullpen  
Kitchen



NORTH



SUITE  
301

### Jay Rubin

Principal  
818.223.4385  
jrubin@lee-re.com  
DRE# 01320005

### Jared Smits

Principal  
818.444.4986  
jsmits@lee-re.com  
DRE# 01839532

### Eugene Kim

Principal  
818.444.4919  
ekim@lee-re.com  
DRE# 01521416

 **LEE &  
ASSOCIATES**  
COMMERCIAL REAL ESTATE SERVICES

Lee & Associates® LA North/Ventura, Inc.

5707 Corsa Ave., Ste 200 - Westlake Village, CA 91362 - Corp ID #01191898 - A Member of the Lee & Associates Group of Companies  
No warranty or representation is made to the accuracy of the foregoing information. Terms of sale or lease and availability are subject to change or withdrawal without notice.

# The Landing

32107-32133 Lindero Canyon Road, Westlake Village

**32133**  
LINDERO  
CANYON ROAD

SUITE  
205/210

## Suite 205

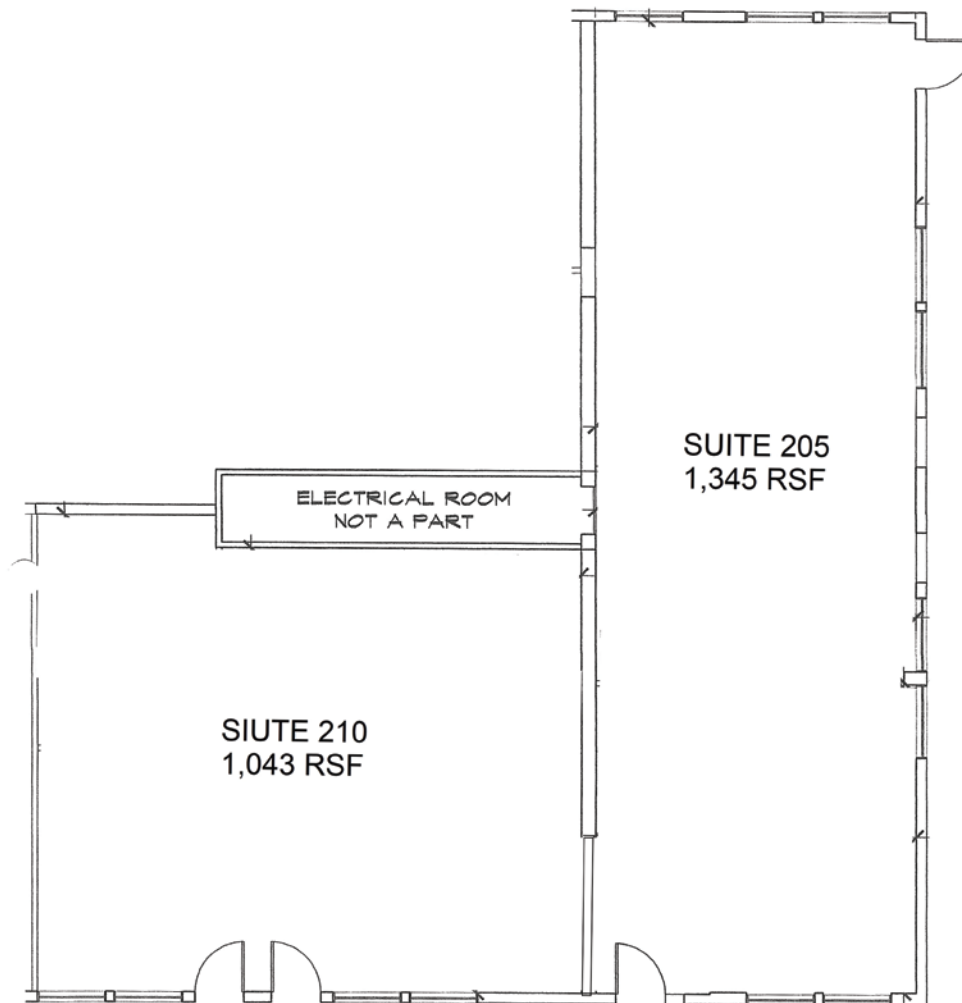
1,345 SF \$3.30

## Suite 210

1,043 SF \$3.30

Lake View  
Shell Condition

205 & 210  
Contiguous for 2,388



### Jay Rubin

Principal  
818.223.4385  
jrubin@lee-re.com  
DRE# 01320005

### Jared Smits

Principal  
818.444.4986  
jsmits@lee-re.com  
DRE# 01839532

### Eugene Kim

Principal  
818.444.4919  
ekim@lee-re.com  
DRE# 01521416

 **LEE &  
ASSOCIATES**  
COMMERCIAL REAL ESTATE SERVICES

Lee & Associates® LA North/Ventura, Inc.

5707 Corsa Ave., Ste 200 - Westlake Village, CA 91362 - Corp ID #01191898 - A Member of the Lee & Associates Group of Companies  
No warranty or representation is made to the accuracy of the foregoing information. Terms of sale or lease and availability are subject to change or withdrawal without notice.



# The Landing

32107-32133 Lindero Canyon Road, Westlake Village



## Jay Rubin

Principal  
818.223.4385  
jrubin@lee-re.com  
DRE# 01320005

## Jared Smits

Principal  
818.444.4986  
jsmits@lee-re.com  
DRE# 01839532

## Eugene Kim

Principal  
818.444.4919  
ekim@lee-re.com  
DRE# 01521416

Lee & Associates® LA North/Ventura, Inc.

5707 Corsa Ave., Ste 200 - Westlake Village, CA 91362 - Corp ID #01191898 - A Member of the Lee & Associates Group of Companies  
No warranty or representation is made to the accuracy of the foregoing information. Terms of sale or lease and availability are subject to change or withdrawal without notice.

 **LEE &  
ASSOCIATES**  
COMMERCIAL REAL ESTATE SERVICES



# The Landing

32107-32133 Lindero Canyon Road, Westlake Village



## SHOPPING & FINE DINING

1. North Ranch Mall
2. The Promenade
3. Costco
4. Shoppes @ Westlake
5. Westlake Plaza
6. The Landing



## ATHLETIC CLUB/SPA

7. Bay Club
8. Equinox
9. Calif. Longevity & Health Institute



## GOLF COURSE

10. Westlake Village Golf Course
11. North Ranch Country Club
12. Sherwood Lake Club



## HOTEL

13. Four Seasons
14. Westlake Village Inn
15. Westlake Hyatt



## SCHOOLS

16. Westlake High School
17. Oaks Christian



## YACHT CLUB

18. Westlake Village Yacht Club



**SUBJECT PROPERTY**  
The Landing, 32107-32133 Lindero Canyon Rd.  
Westlake Village, CA

LIVE.WORK.PLAY.

**Jay Rubin**

Principal  
818.223.4385  
jrubin@lee-re.com  
DRE# 01320005

**Jared Smits**

Principal  
818.444.4986  
jsmits@lee-re.com  
DRE# 01839532

**Eugene Kim**

Principal  
818.444.4919  
ekim@lee-re.com  
DRE# 01521416

**LEE & ASSOCIATES**  
COMMERCIAL REAL ESTATE SERVICES

Lee & Associates® LA North/Ventura, Inc.

5707 Corsa Ave., Ste 200 - Westlake Village, CA 91362 - Corp ID #01191898 - A Member of the Lee & Associates Group of Companies  
No warranty or representation is made to the accuracy of the foregoing information. Terms of sale or lease and availability are subject to change or withdrawal without notice.